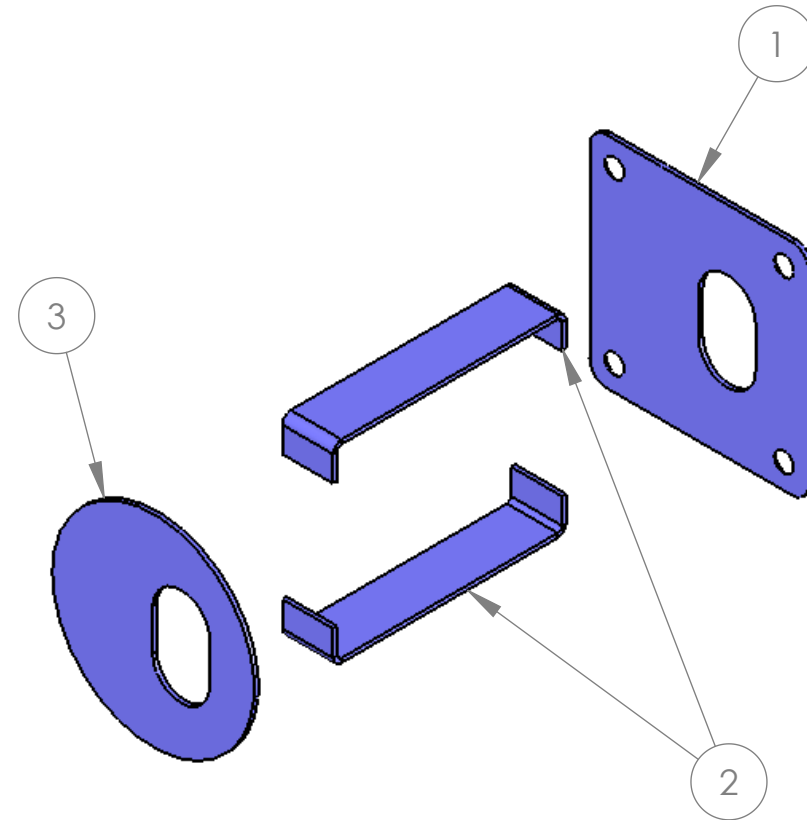
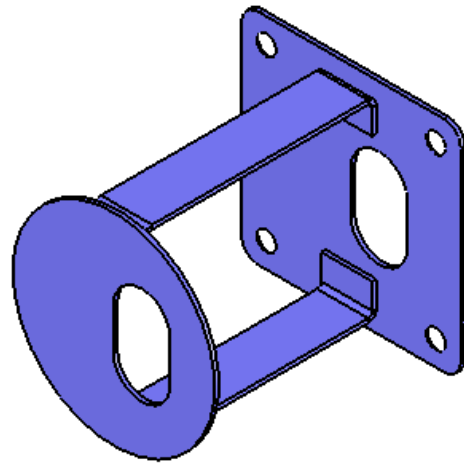
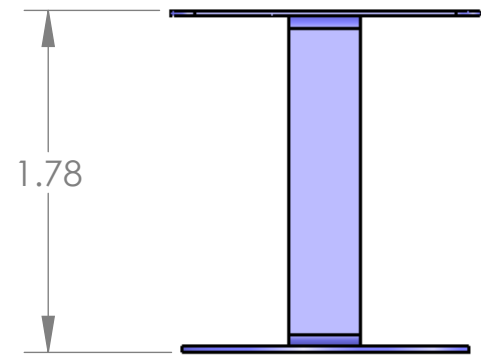
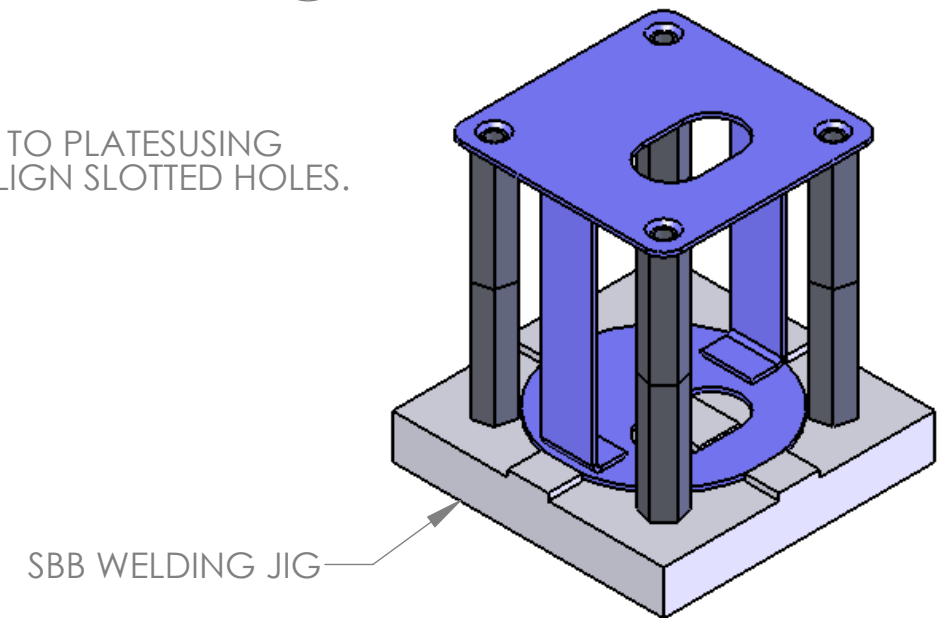
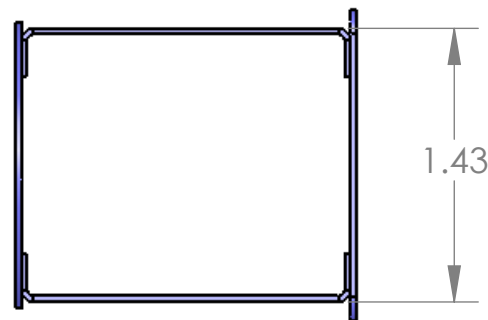
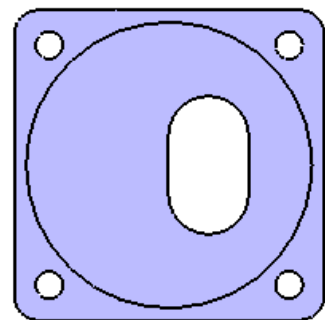


ITEM NO.	PART NUMBER / DESCRIPTION	QTY.
1	TRDOP96B SBB Downstream Plate	1
2	TRDOP96C SBB Stringer	2
3	TRDOP96A SBB Upstream Plate	1

REVISIONS				
ZONE	REV.	DESCRIPTION	DATE	APPROVED
	0	INITIAL RELEASE.	05/15/07	JCW



NOTES:
 1. TACK WELD STRINGERS TO PLATES USING SBB WELDING JIG TO ALIGN SLOTTED HOLES.



UNLESS OTHERWISE SPECIFIED DIMENSIONS ARE IN INCHES, REMOVE BURRS AND BREAK SHARP EDGES 0.005-0.010
 TOLERANCES: .XX±.010 .XXX±.005
 ANGLES ±0.5° UNLESS NOTED,
 ALL SURFACES 64 UNLESS NOTED

MATERIAL:
 QTY: 3



NAME: TRIPLESPEC
 DRAWN: SCP
 CHECKED: JCW
 APPROVED:
 FABRICATED:

INIT. DATE:
 SCP 05/09/07
 JCW 05/15/07

Cornell University
 Center for Radiophysics and Space Research - Ithaca, NY 14853

TITLE: SLIT BLOCK BAFFLE

SIZE: B DRAWING # TRDOP96 REV 0

FILE: TRDOP96 Slit Block Baffle SCALE: 1:1 DATE: 5/21/2007 SHEET 1 OF 1