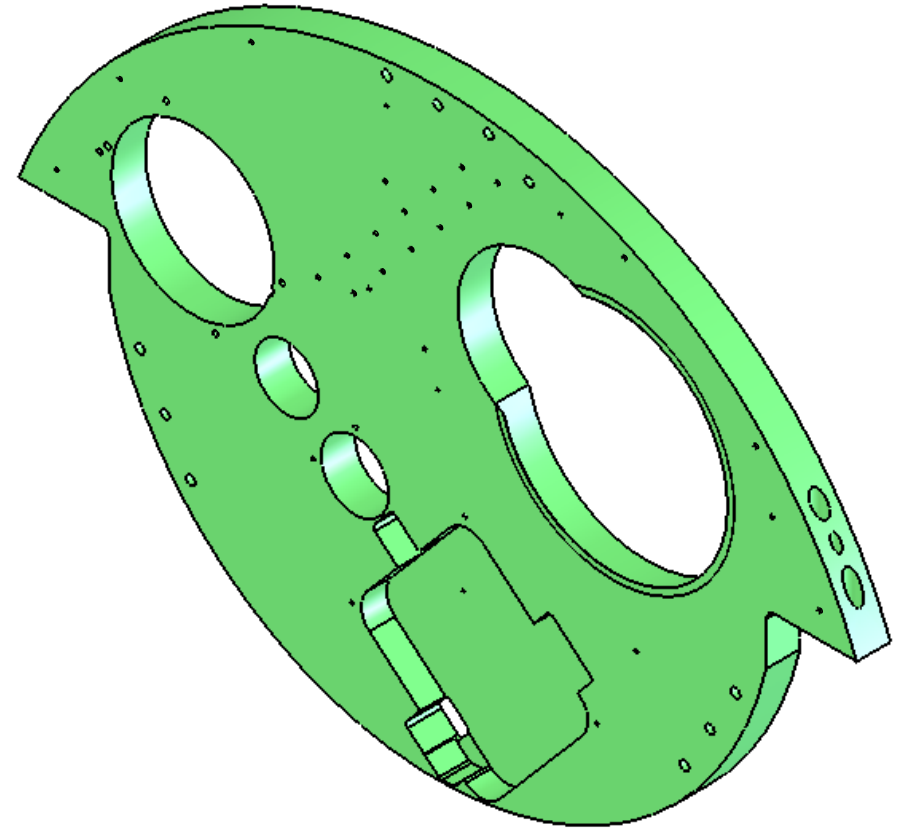
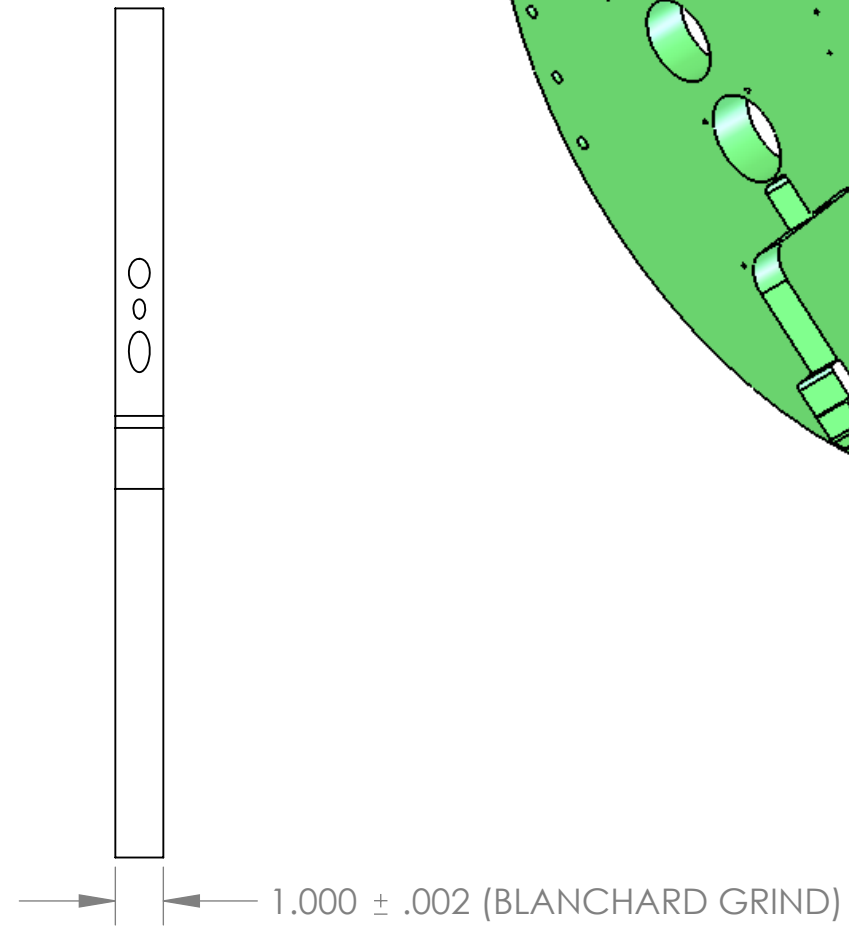
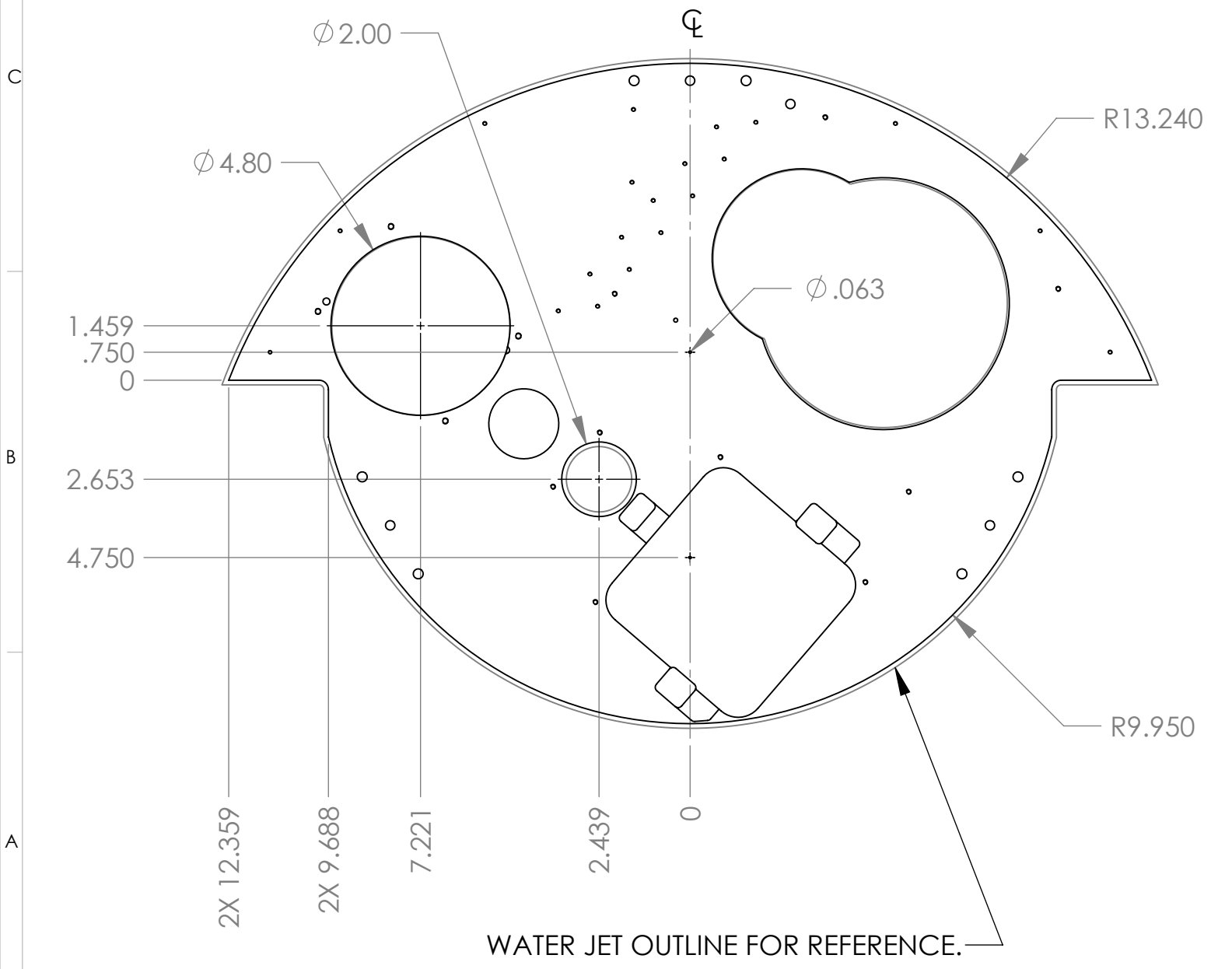
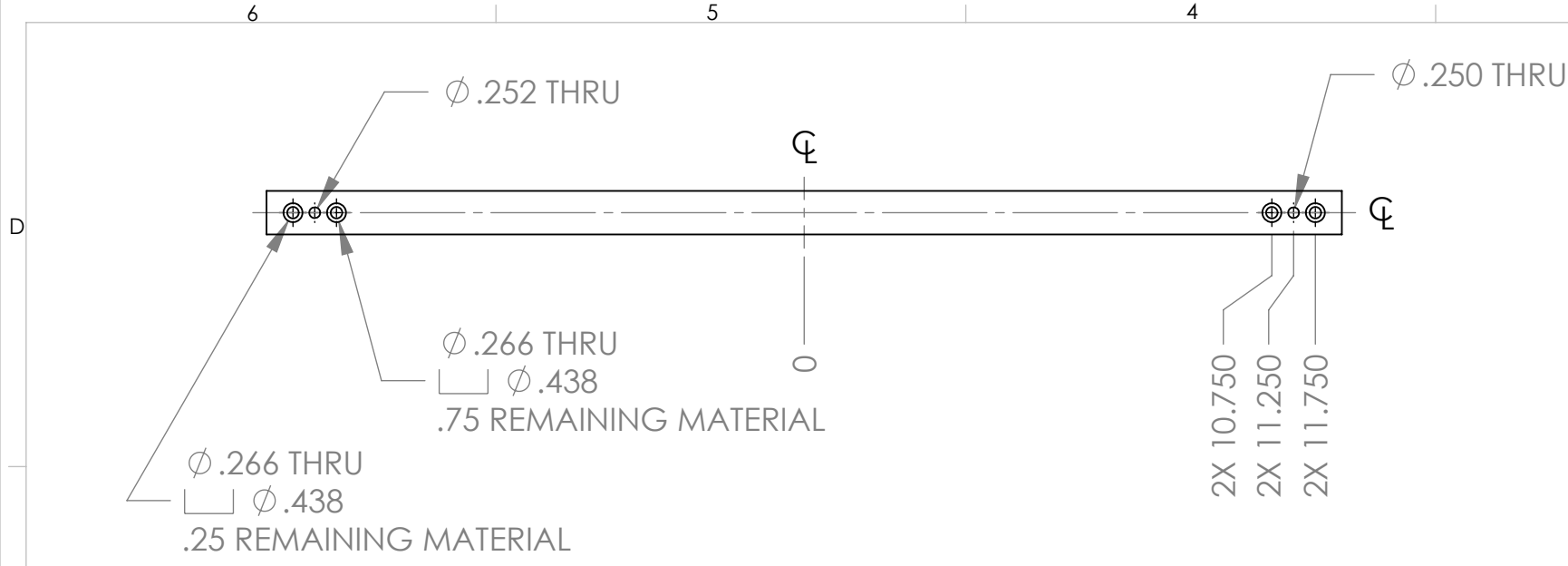
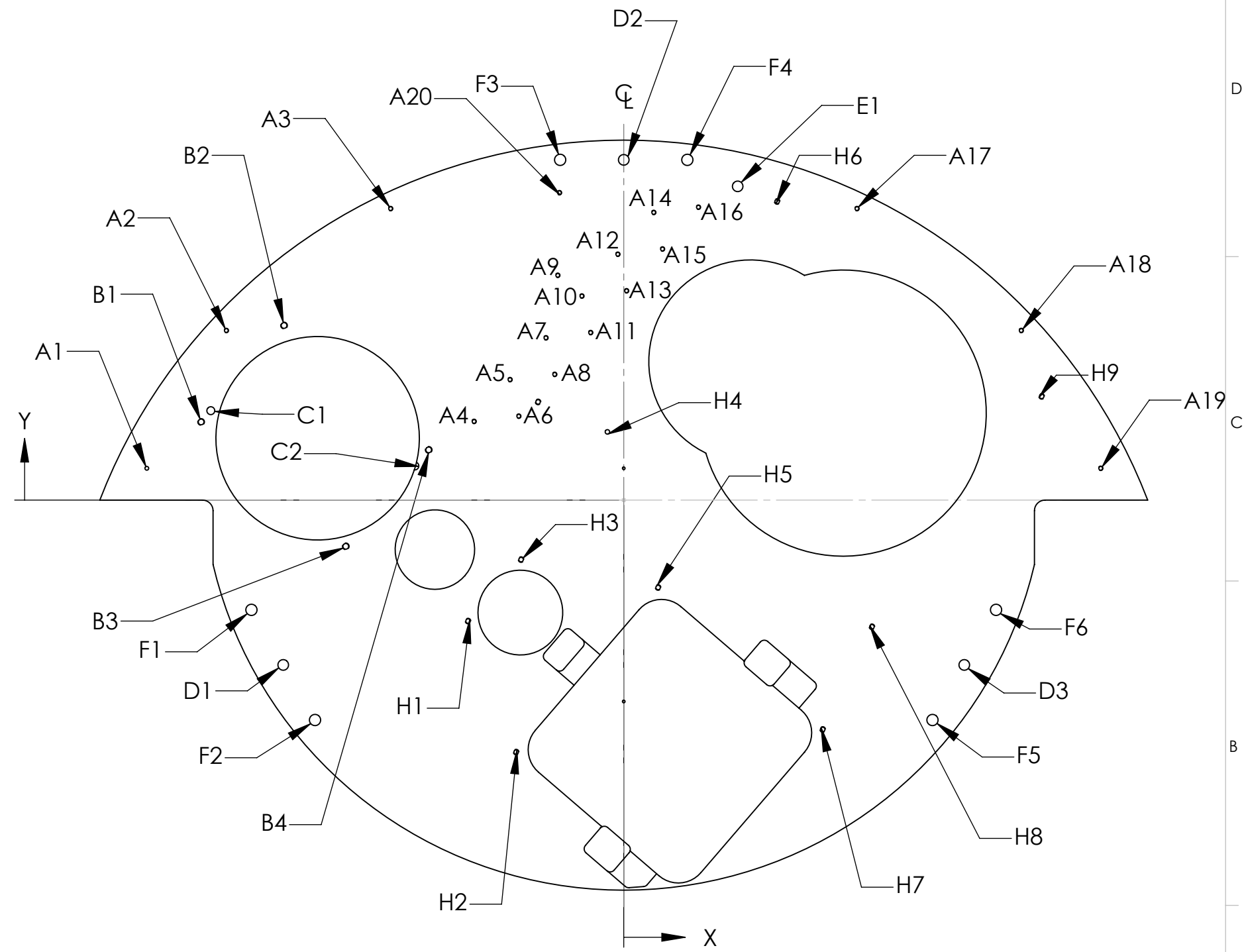


REVISIONS				
ZONE	REV.	DESCRIPTION	DATE	APPROVED
	0	INITIAL RELEASE.	02/16/07	CH
	1	CHANGED SHEET 2 TO HOLE TABLE. ADDED SHEET 3 & 4.	03/15/07	CH
	2	ADDED HOLES H1-H9,A20 MOVED HOLE A4	3/16/07	CH



UNLESS OTHERWISE SPECIFIED DIMENSIONS ARE IN INCHES, REMOVE BURS AND BREAK SHARP EDGES 0.005-0.010				TRIPLESPEC		Cornell University Center for Radiophysics and Space Research - Ithaca, NY 14853	
TOLERANCES: .XX±.010 .XXX±.005 ANGLES ±0.5° UNLESS NOTED, ALL SURFACES 64 UNLESS NOTED		NAME:	INIT.	DATE:	TITLE:	3rd BULKHEAD, Pal-Keck	
MATERIAL: 6061-T6 ALUM QTY: 2		DRAWN: SCP	SCP	03/15/07	SIZE: B	DRAWING #	REV 2
		CHECKED: CH	CH	03/15/07	TRDOP02		
		APPROVED:			SCALE: 1:4	DATE: 3/16/2007	SHEET 1 OF 4
		FABRICATED:			FILE: TRDOP02 3RD BULKHEAD, Pal-Keck		

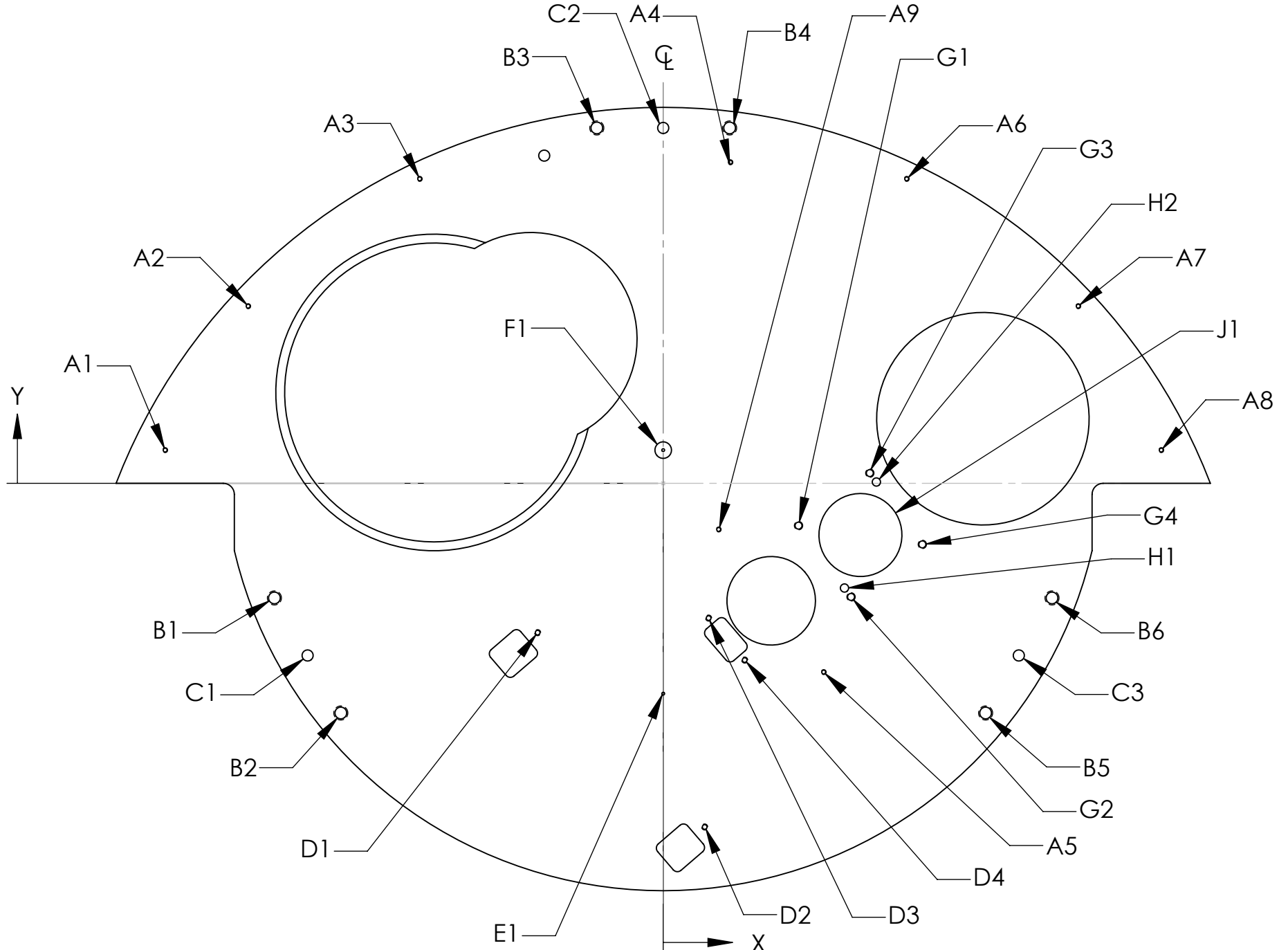
HOLE TABLE			SIZE
TAG	X LOC	Y LOC	
A1	-11.250	.750	ϕ .089 ∇ .299 4-40 UNC ∇ .224
A2	-9.375	4.000	
A3	-5.500	6.875	
A4	-3.531	1.856	
A5	-2.683	2.841	
A6	-2.477	1.979	
A7	-1.836	3.827	
A8	-1.630	2.965	
A9	-1.557	5.302	
A10	-.988	4.813	
A11	-.782	3.951	
A12	-.141	5.799	
A13	.066	4.937	
A14	.707	6.784	
A15	.913	5.922	
A16	1.761	6.908	
A17	5.500	6.875	
A18	9.375	4.000	
A19	11.250	.750	
A20	-1.518	7.250	
B1	-9.969	1.844	ϕ .136 ∇ .422 8-32 UNC ∇ .328
B2	-8.013	4.118	
B3	-6.557	-1.090	
B4	-4.601	1.184	
C1	-9.741	2.109	ϕ .188 ∇ .150
C2	-4.927	.805	
D1	-8.032	-3.887	ϕ .252 ∇ .250
D2	.000	8.025	
D3	8.032	-3.887	
E1	2.688	7.400	ϕ .25 THRU ϕ .266 ∇ .675 TAP FOR 1/4-20 HELICOIL INSERT = 1.0 * DIA.
F1	-8.782	-2.588	
F2	-7.282	-5.187	
F3	-1.500	8.025	
F4	1.500	8.025	
F5	7.282	-5.187	
F6	8.782	-2.588	
H1	-3.673	-2.853	ϕ .107 ∇ .370 6-32 UNC ∇ .276
H2	-2.538	-5.944	
H3	-2.422	-1.403	
H4	-.385	1.609	
H5	.810	-2.061	
H6	3.618	7.043	
H7	4.692	-5.409	
H8	5.854	-2.988	
H9	9.858	2.446	





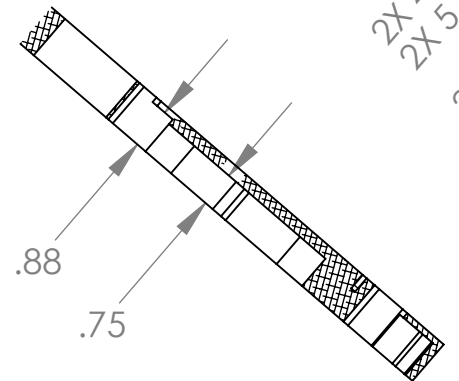
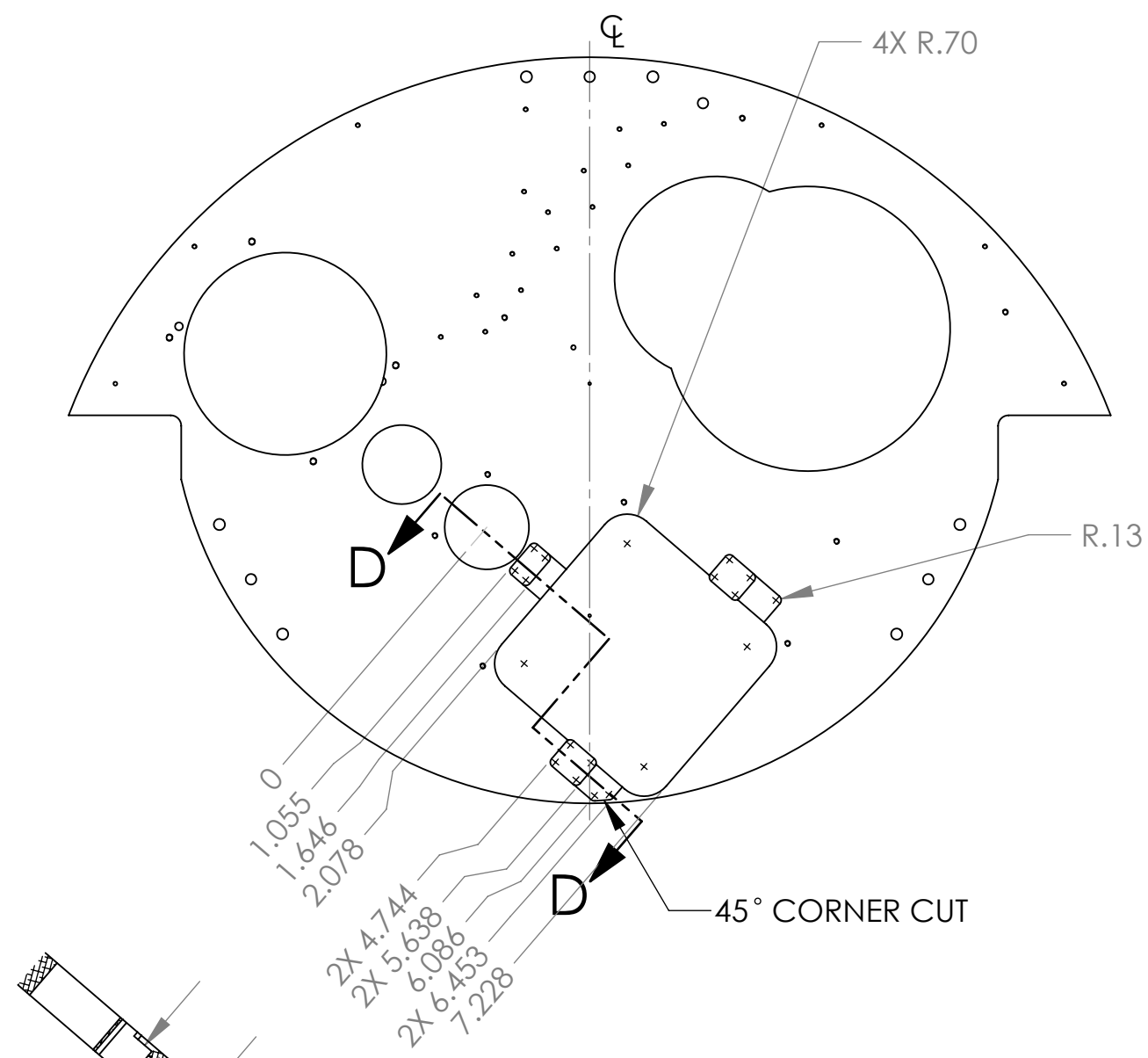
NOTE: HOLE C2 DOES NOT FULLY ENGAGE MATERIAL

UNLESS OTHERWISE SPECIFIED DIMENSIONS ARE IN INCHES, REMOVE BURS AND BREAK SHARP EDGES 0.005-0.010				Cornell University Center for Radiophysics and Space Research - Ithaca, NY 14853	
TOLERANCES: .XX±.010 .XXX±.005 ANGLES ±0.5° UNLESS NOTED, ALL SURFACES 64 UNLESS NOTED				TRIPLESPEC	
MATERIAL: 6061-T6 ALUM		NAME:	INIT.	DATE:	SIZE: B DRAWING # TRDOP02 REV 2
QTY: 2		DRAWN: SCP	CH	03/15/07	
		CHECKED: CH	CH	03/15/07	
		APPROVED:			
		FABRICATED:			SCALE: 1:3
		FILE: TRDOP02 3RD BULKHEAD, Pal-Keck		DATE: 3/16/2007	SHEET 2 OF 4

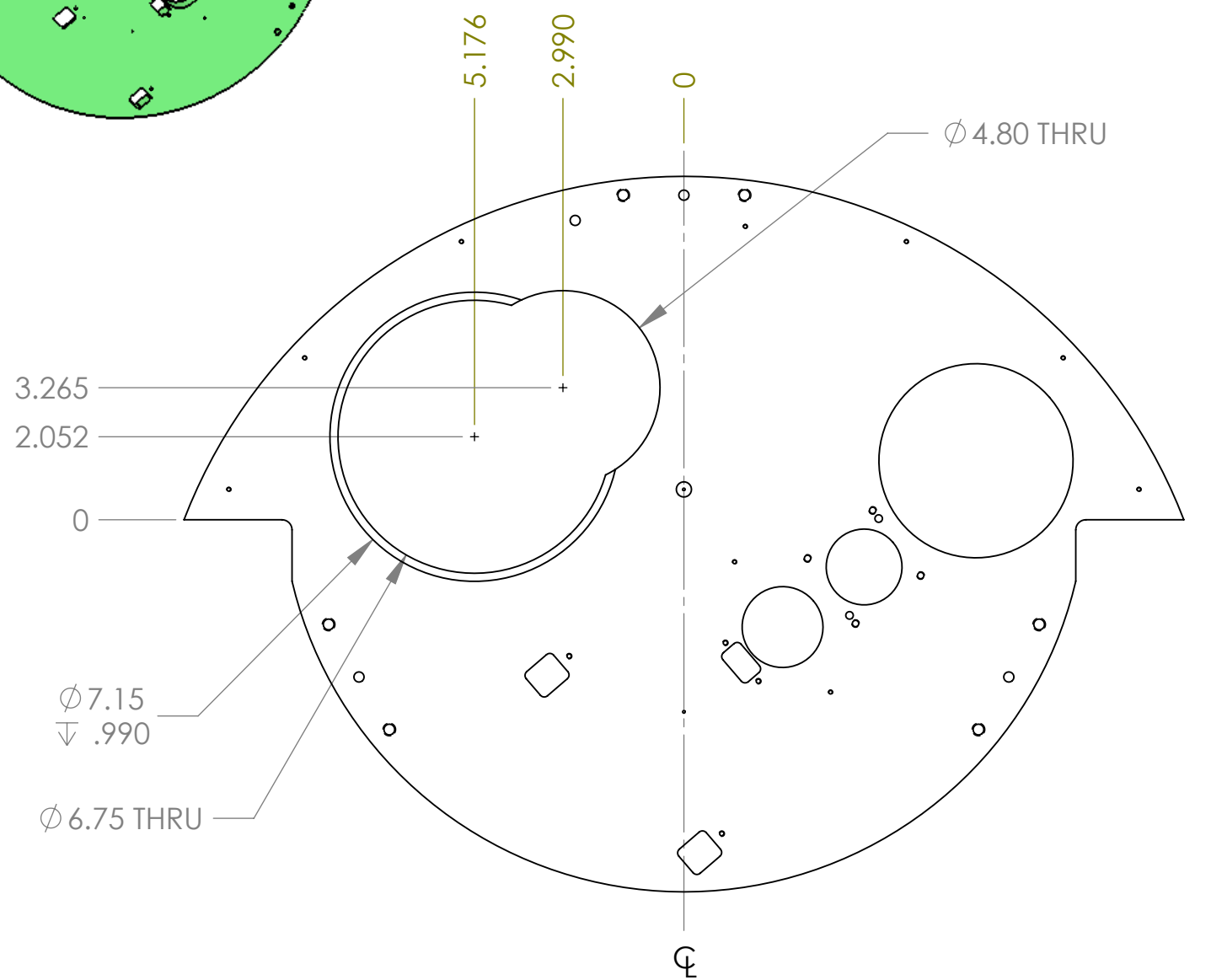
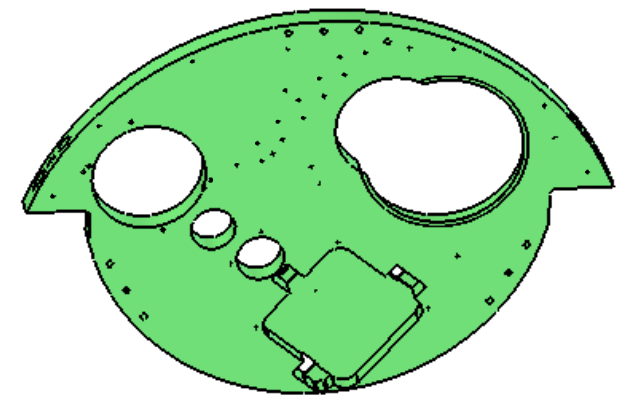
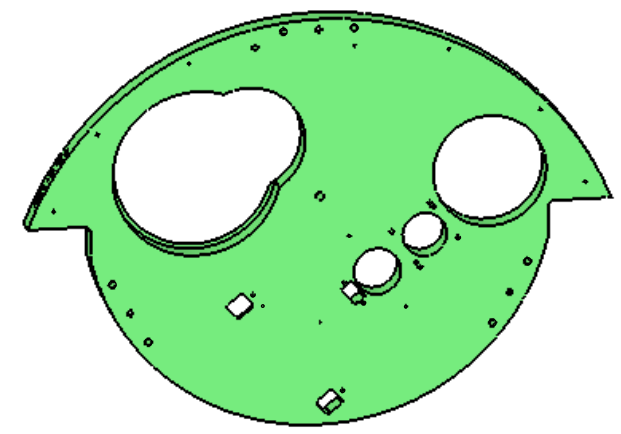
HOLE TABLE			
TAG	X LOC	Y LOC	SIZE
A1	-11.250	.750	ϕ .089 ∇ .299 4-40 UNC ∇ .224
A2	-9.375	4.000	
A3	-5.500	6.875	
A4	1.518	7.250	
A5	3.625	-4.263	
A6	5.500	6.875	
A7	9.375	4.000	
A8	11.250	.750	
A9	1.253	-1.043	
B1	-8.782	-2.588	ϕ .266 ∇ .675 TAP FOR 1/4-20 HELICOIL INSERT = 1.0 * DIA.
B2	-7.282	-5.187	
B3	-1.500	8.025	
B4	1.500	8.025	
B5	7.282	-5.187	
B6	8.782	-2.588	ϕ .252 ∇ .250
C1	-8.032	-3.887	
C2	.000	8.025	
C3	8.032	-3.887	ϕ .107 THRU TAP FOR #6-32 HELICOIL BOTTOMING TAPPED HOLE
D1	-2.836	-3.372	
D2	.937	-7.761	
D3	1.026	-3.044	
D4	1.841	-3.991	ϕ .063 THRU ϕ .063 THRU \perp ϕ .375 ∇ .875
E1	.000	-4.750	
F1	.000	.750	ϕ .159 ∇ .536 10-32 UNF ∇ .380
G1	3.057	-0.955	
G2	4.243	-2.566	
G3	4.667	.231	
G4	5.853	-1.379	ϕ .188 ∇ .200
H1	4.095	-2.364	
H2	4.815	.030	
J1	4.455	-1.167	ϕ 1.875





UNLESS OTHERWISE SPECIFIED DIMENSIONS ARE IN INCHES, REMOVE BURS AND BREAK SHARP EDGES 0.005-0.010		 		TRIPLESPEC		Cornell University Center for Radiophysics and Space Research - Ithaca, NY 14853	
TOLERANCES: .XX±.010 .XXX±.005 ANGLES ±0.5° UNLESS NOTED, ALL SURFACES 64 UNLESS NOTED		NAME:	INIT.	DATE:	TITLE:	3rd BULKHEAD	
MATERIAL: 6061-T6 ALUM QTY: 2		DRAWN: SCP	CH	03/15/07	SIZE: B	DRAWING #	REV 2
		CHECKED: CH	CH	03/15/07	SCALE: 1:3	DATE: 3/16/2007	SHEET 3 OF 4
		APPROVED:					
		FABRICATED:					
		FILE: TRDOP02 3RD BULKHEAD, Pal-Keck					



SECTION D-D



UNLESS OTHERWISE SPECIFIED DIMENSIONS ARE IN INCHES, REMOVE BURS AND BREAK SHARP EDGES 0.005-0.010		 		TRIPLESPEC		Cornell University Center for Radiophysics and Space Research - Ithaca, NY 14853	
TOLERANCES: .XX±.010 .XXX±.005 ANGLES ±0.5° UNLESS NOTED, ALL SURFACES 64 UNLESS NOTED		NAME:	INIT.	DATE:	TITLE:	3rd BULKHEAD	
MATERIAL: 6061-T6 ALUM QTY: 2		DRAWN: SCP	CH	03/15/07	SIZE: B	DRAWING #	REV 2
		CHECKED: CH	CH	03/15/07	TRDOP02		
		APPROVED:			SCALE: 1:4	DATE: 3/16/2007	SHEET 4 OF 4
		FABRICATED:			FILE: TRDOP02 3RD BULKHEAD, Pal-Keck		