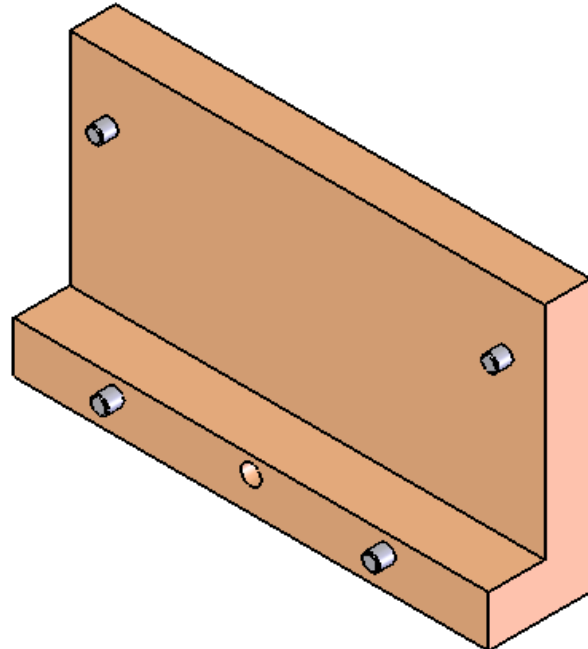
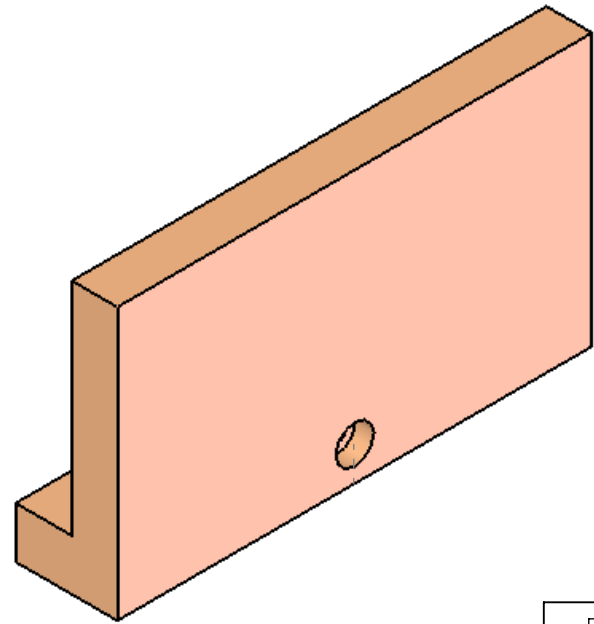
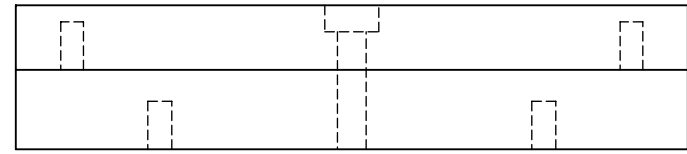


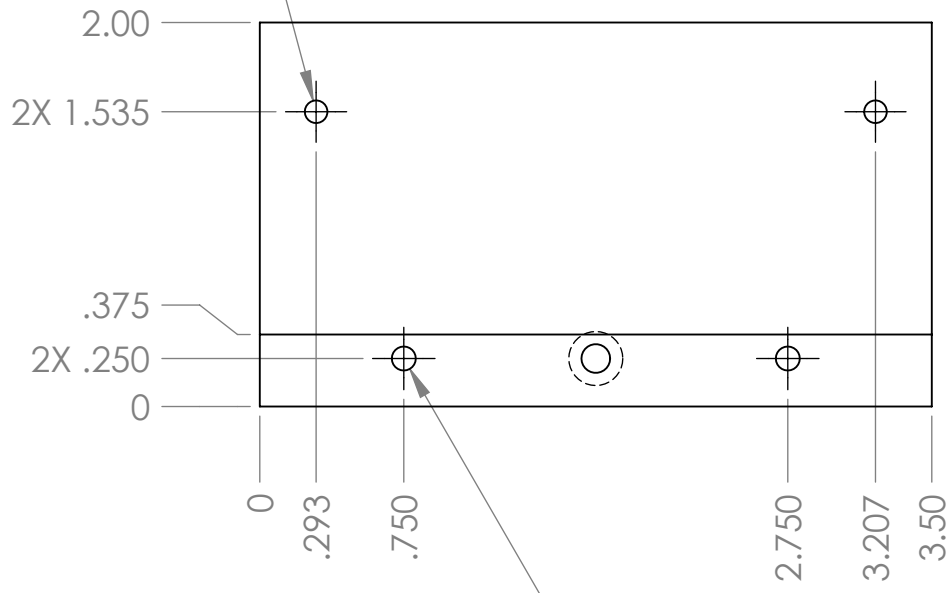
REVISIONS				
ZONE	REV.	DESCRIPTION	DATE	APPROVED
	0	INITIAL RELEASE.	07/01/06	CH
	1	FIXED $\phi$ .127 TO .125, ADDED VIEW WITH PINS AND CUSTOM PIN SPECS, ADDED BACK VIEW.	05/16/07	SCP



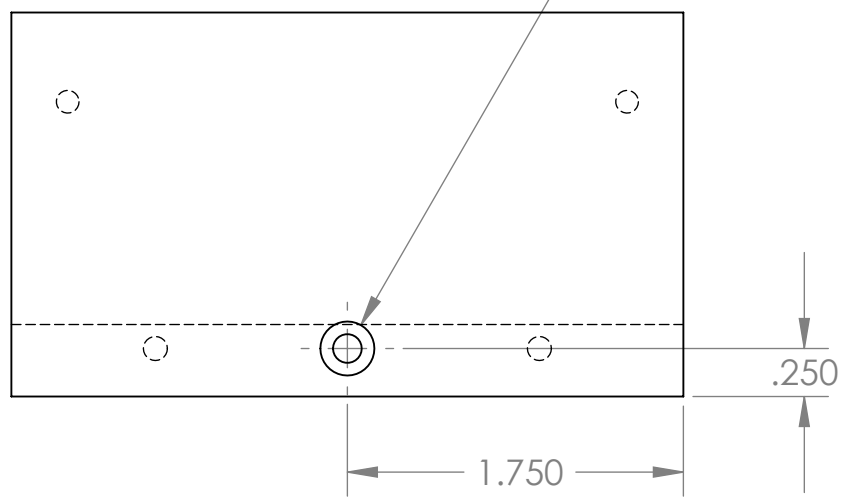
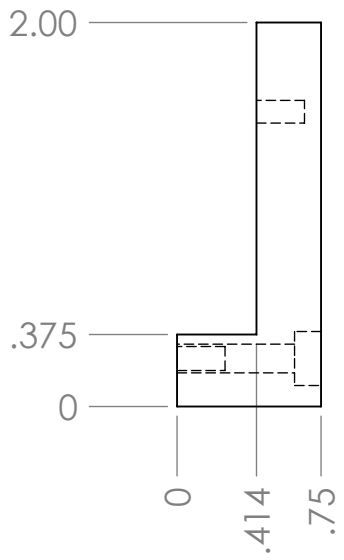
VIEW WITH PINS.



2X  $\phi$  .118  $\nabla$  .250  
 PRESS FIT CUSTOM  
 $\phi$  3 mm x 6 mm PINS  
 $\phi$  .1188 HALF IN PART,  
 $\phi$  .1180 HALF PROTRUDING



2X  $\phi$  .125  $\nabla$  .250  
 PRESS FIT .125 PINS



$\phi$  .150 THRU ALL  
 $\square$   $\phi$  .281  $\nabla$  .138

UNLESS OTHERWISE SPECIFIED DIMENSIONS ARE IN INCHES, REMOVE BURRS AND BREAK SHARP EDGES 0.005-0.010

TOLERANCES: .XX  $\pm$  .010 .XXX  $\pm$  .005  
 ANGLES  $\pm$  0.5° UNLESS NOTED,  
 ALL SURFACES 64  $\nabla$  UNLESS NOTED

MATERIAL:  
**QNTY: 3**

**TRIPLESPEC**

Cornell University  
 Center for Radiophysics and Space Research - Ithaca, NY 14853

NAME:	INIT.:	DATE:	TITLE:
DRAWN:	SCP	05/16/07	COLIMATOR GUIDE
CHECKED:	SCP	05/16/07	
APPROVED:			
FABRICATED:			

FILE: TRDOP35 Colimator Guide

SIZE: **B** DRAWING # **TRDOP35** REV **1**

SCALE: 1:1 DATE: 5/16/2007 SHEET 1 OF 1