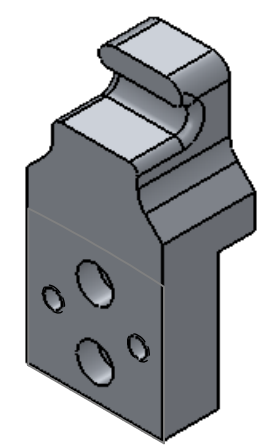
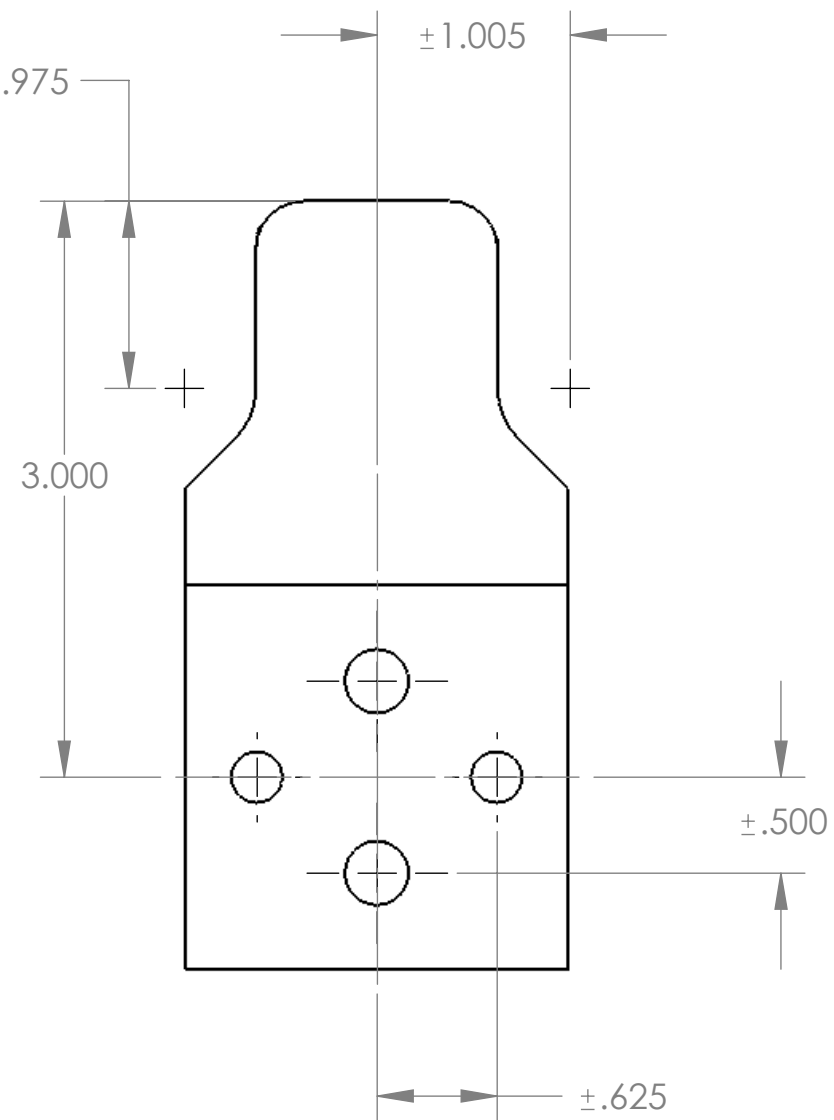
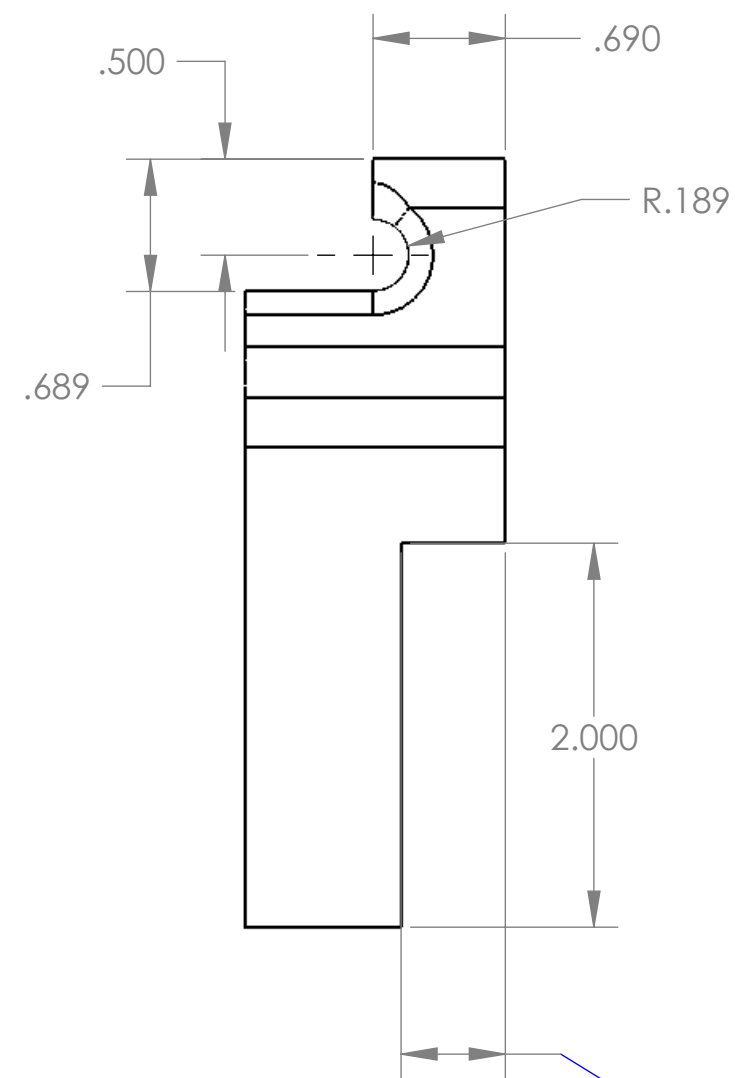
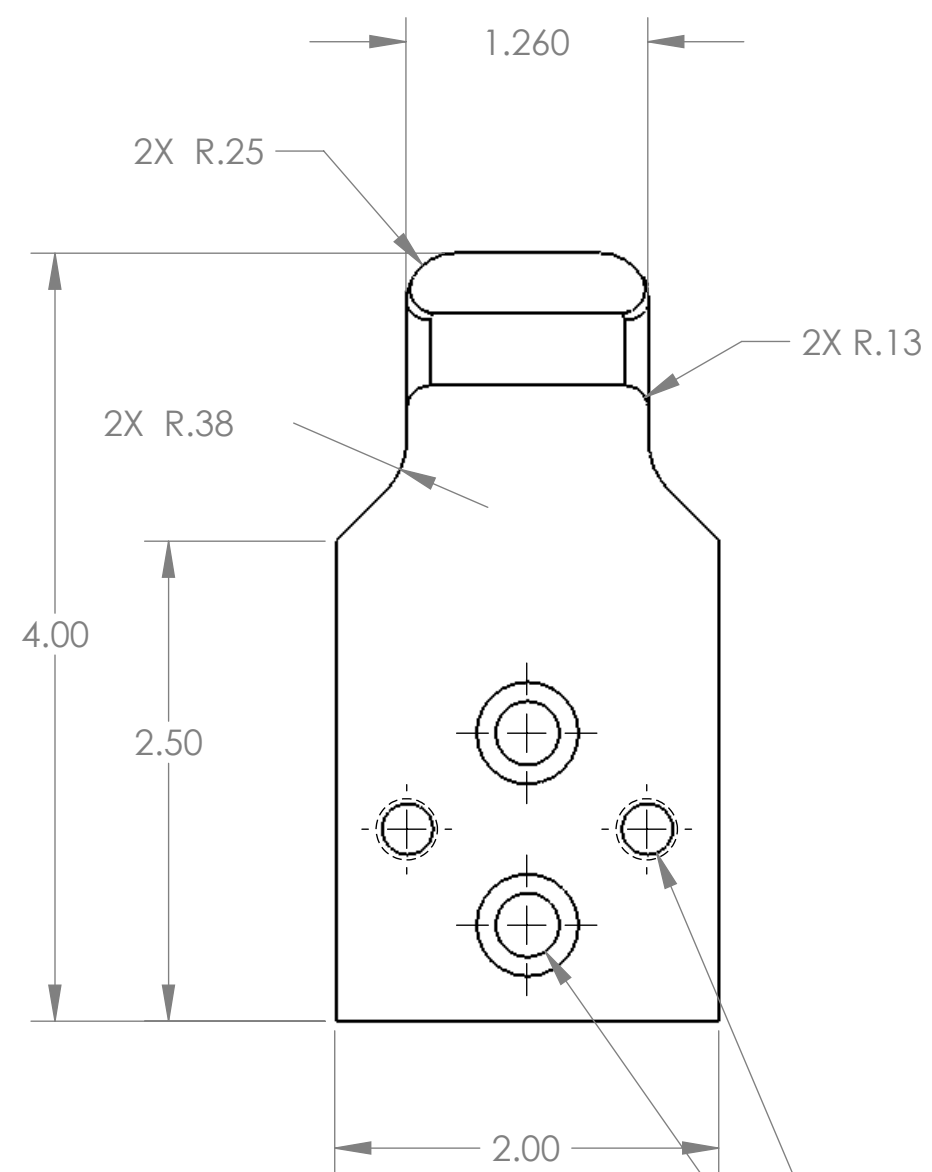


REVISIONS				
REV.	ZONE	DESCRIPTION	DATE	APPROVED
0		Initial Release.	8/31/2004	
1		Added material near notch Variable Dim. for Dewar Flange	1/25/2008	CH



2X  $\phi$  .266 THRU ALL  
TAP FOR 1/4-20 HELICOIL INSERT = 2.0 \* DIA.

2X  $\phi$  .332 THRU ALL  
 $\square$   $\phi$  .531  $\nabla$  .313

Part	Dimension
Bottom Starboard	.543
Bottom Port	.573
Top Starboard	.631
Top Port	.633

UNLESS OTHERWISE SPECIFIED DIMENSIONS ARE IN INCHES, REMOVE BURRS AND BREAK SHARP EDGES 0.005-0.010  
TOLERANCES: .XX±.010 .XXX±.005 ANGLES ±0.5° UNLESS NOTED, ALL SURFACES 64 UNLESS NOTED  
MATERIAL: 6061-T6 AL.  
QNTY: 4

NAME: INIT. DATE: TITLE: TRIPLESPEC  
DRAWN: CH  
CHECKED:  
APPROVED:  
FABRICATED:  
FILE: TRDMO01 Clamp Receiver-Rev 1

Cornell University  
Center for Radiophysics and Space Research - Ithaca, NY 14853  
TITLE: TRDMO001 CLAMP RECEIVER  
SIZE: B DRAWING # TRDMO01 REV 1  
SCALE: 1:1 DATE: 1/25/2008 SHEET 1 OF 1