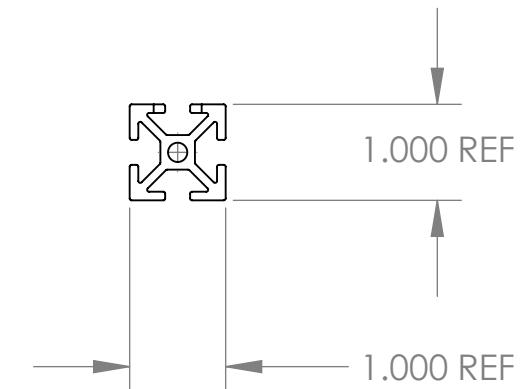
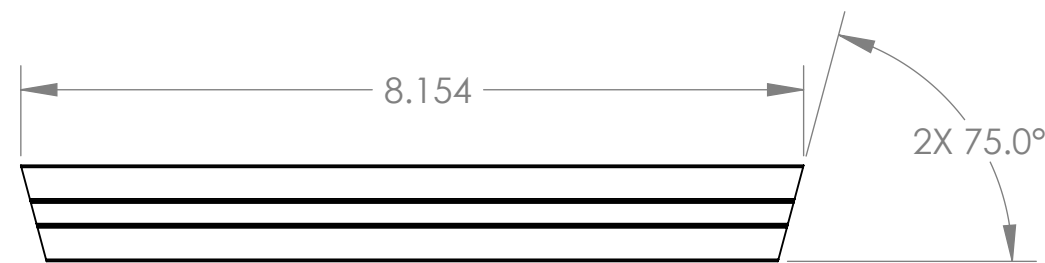
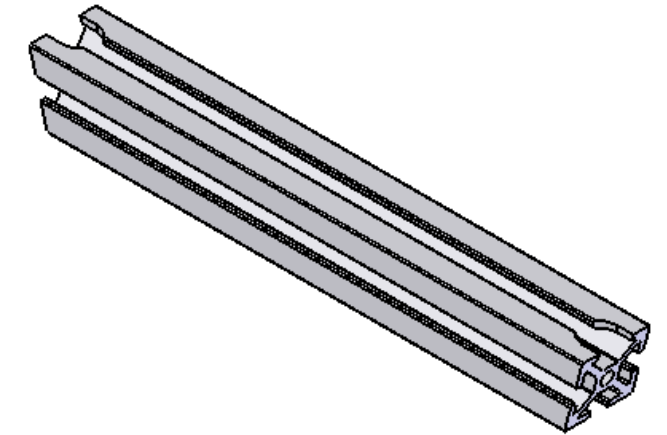
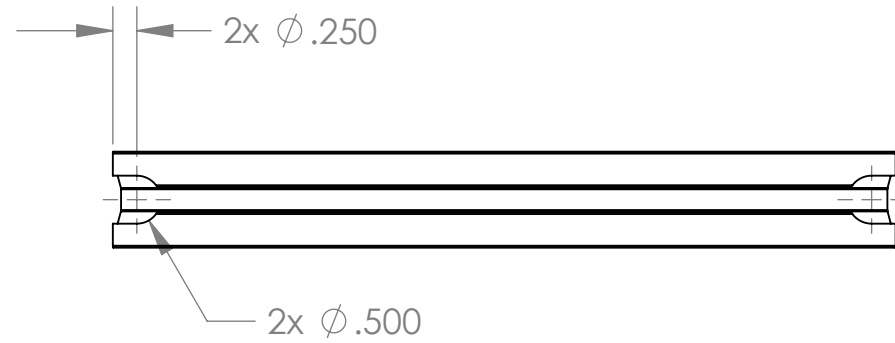


REVISIONS				
ZONE	REV.	DESCRIPTION	DATE	APPROVED
	0	INITIAL RELEASE.	08/02/07	JCW
	1	SIMPLIFIED RELIEF CUT FOR T-NUT INSERTION.	09/06/07	SCP



NOTE:
1. USE 1" X 1", 1/4" T-SLOT, ALUMINUM FRAMING SYSTEM (MCMMASTER-CARR OR EQUIVALENT).

UNLESS OTHERWISE SPECIFIED DIMENSIONS ARE IN INCHES, REMOVE BURRS AND BREAK SHARP EDGES 0.005-0.010
TOLERANCES: .XX \pm .010 .XXX \pm .005
ANGLES \pm 0.5° UNLESS NOTED, ALL SURFACES 64 UNLESS NOTED

MATERIAL: AS NOTED
QTY: 30



NAME: INIT. DATE: TITLE:
DRAWN: SCP 09/06/07
CHECKED: SCP 09/06/07
APPROVED:
FABRICATED:

TRIPLESPEC

Cornell University
Center for Radiophysics and Space Research - Ithaca, NY 14853

TITLE: SX1010M - DOUBLE ANGLE

SIZE: B DRAWING # TRDEM05 REV 0

FILE: TRDEM05 SX1010M - double angle

SCALE: 1:2 DATE: 9/6/2007 SHEET 1 OF 1