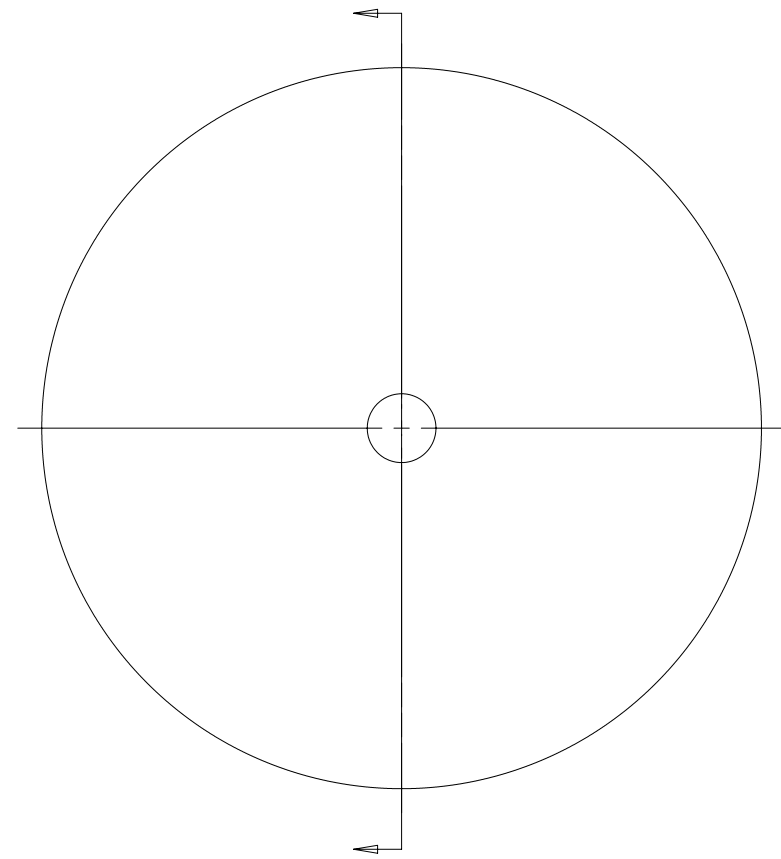
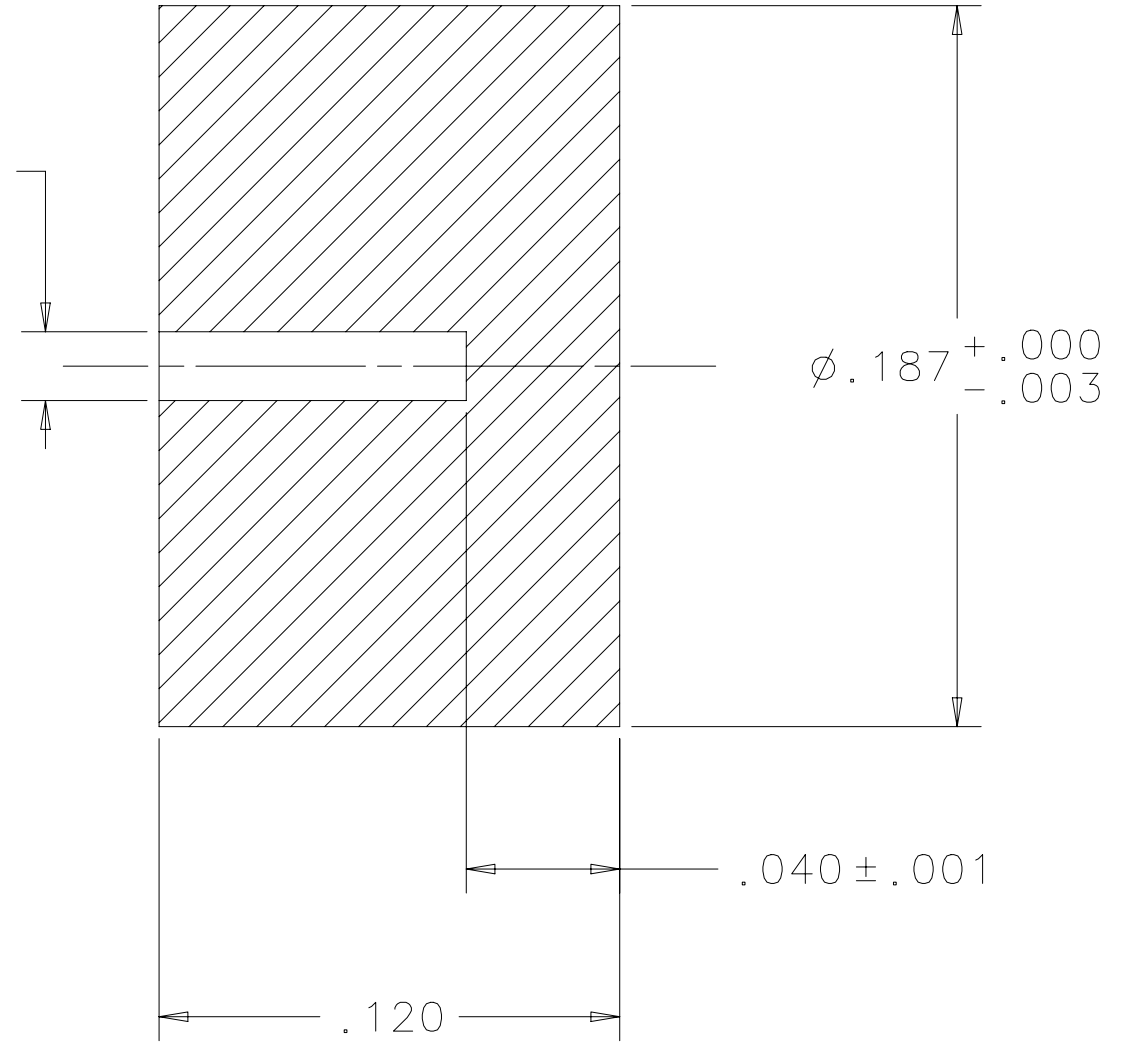


REV.	DESCRIPTION	APPROV.	DATE



$\phi .018$ (STD WIRE GAUGE)



- NOTE:
- HEAT TREATED TO ROCKWELL C36-40.
 - MATERIAL: AISI TYPE 416 STAINLESS STEEL.

NEXT ASSEMBLY 006006

NIRES-D85

Infrared Physics
CALIFORNIA INSTITUTE OF TECHNOLOGY
Pasadena, California

UNLESS OTHERWISE SPECIFIED DIMENSIONS ARE IN INCHES .005/.010 EDGE BROKEN THREADS PER MIL-S-7742 MACHINED SURFACE 63 MAX MACHINED INSIDE CORNER R.005 MAX TOLERANCE .XX: ±.01 X/X: ±1/64 .XXX: ±.005 ANG:±.5	SIGNATURE		DATE	TITLE	MIRROR PAD INSERT	
	DWN BY	SEAN LIN	2 2 06	DRAWING NUMBER	680007	REV. N/C
	CHK BY			DWG SIZE B	SCALE 20/1	SHEET 1 OF 1
	APPR BY					