

2X ϕ .173 ∇ .438
 TAP FOR #8-32 HELICOIL INSERT = 1.0 * DIA.

VIEW C-C
 SCALE 1 : 2

VIEW B-B
 SCALE 1 : 2

VIEW D-D
 SCALE 1 : 2

VIEW A-A
 SCALE 1 : 2

SLOT DEPTH .05
 SLOT DEPTH .05

6X ϕ .120 ∇ .318
 TAP FOR #4-40 HELICOIL INSERT = 1.0 * DIA.

UNLESS OTHERWISE SPECIFIED DIMENSIONS
 ARE IN INCHES, REMOVE BURS AND
 BREAK SHARP EDGES 0.005-0.010
 TOLERANCES: .XX \pm .010 .XXX \pm .005
 ANGLES \pm 0.5° UNLESS NOTED,
 ALL SURFACES 64 ∇ UNLESS NOTED
 MATERIAL: 6061 T6 ALUMINUM
 QNTY: 3

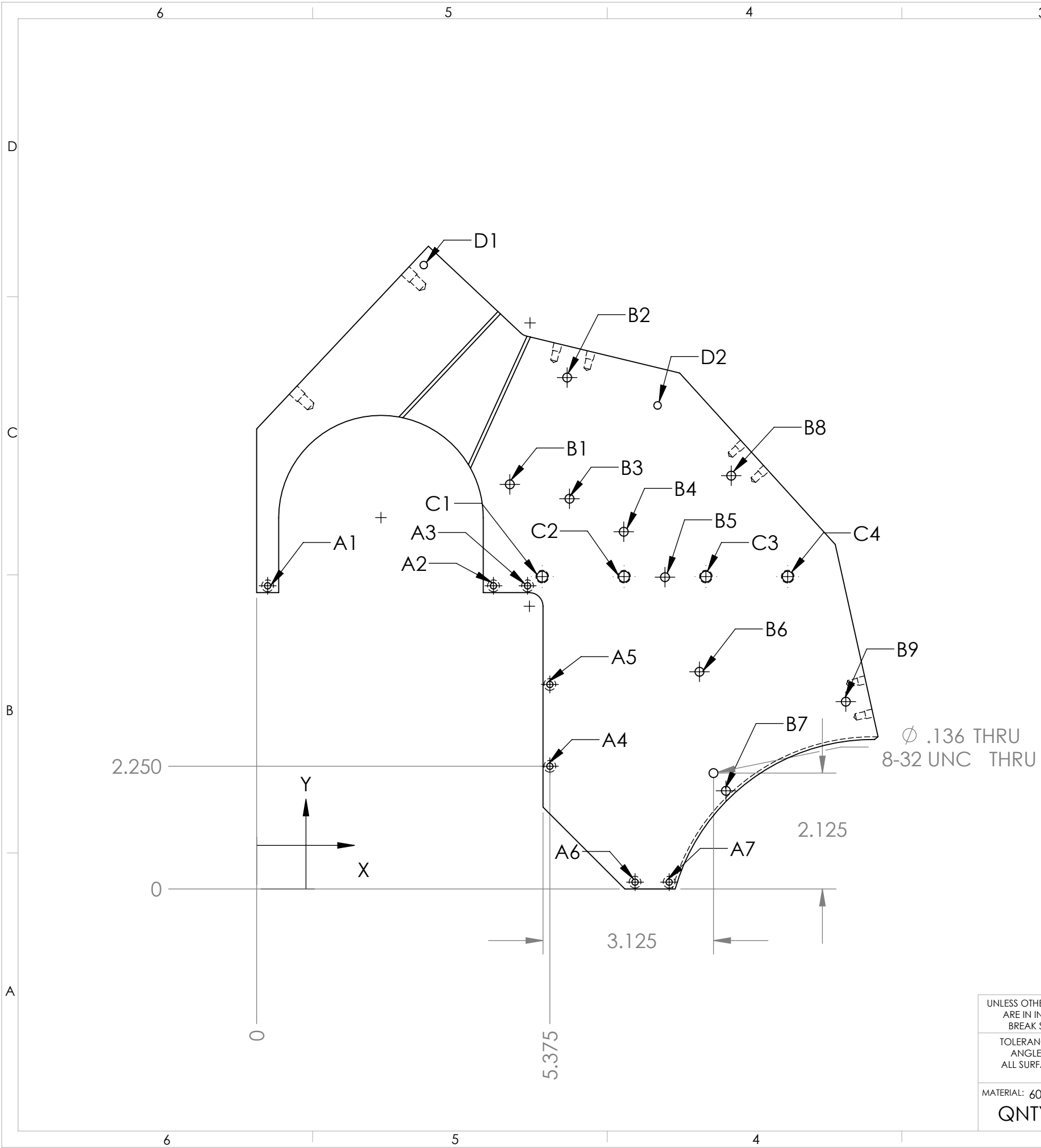


TRIPLESPEC

Cornell University
 Center for Radiophysics and Space Research - Ithaca, NY 14853

NAME:	INIT.	DATE:
DRAWN:	BB	
CHECKED:		
APPROVED:		
FABRICATED:		
FILE: TRDOP10 PRESSURE PLATE		

TITLE:	PRESSURE PLATE		
SIZE:	B	DRAWING #	TRDOP10
SCALE:	1:1	DATE:	7/12/2007
		SHEET	2 OF 4
		REV	1



TAG	X LOC	Y LOC	SIZE
A1	.202	5.560	Ø .116 THRU └─┘ Ø .219 ▽ .112
A2	4.342	5.560	Ø .116 THRU └─┘ Ø .219 ▽ .112
A3	4.967	5.560	Ø .116 THRU └─┘ Ø .219 ▽ .112
A4	5.375	2.250	Ø .116 THRU └─┘ Ø .219 ▽ .112
A5	5.375	3.751	Ø .116 THRU └─┘ Ø .219 ▽ .112
A6	6.937	.125	Ø .116 THRU └─┘ Ø .219 ▽ .112
A7	7.562	.125	Ø .116 THRU └─┘ Ø .219 ▽ .112
B1	4.642	7.420	Ø .136 THRU 8-32 UNC - 2B THRU
B2	5.692	9.378	Ø .136 THRU 8-32 UNC - 2B THRU
B3	5.735	7.156	Ø .136 THRU 8-32 UNC - 2B THRU
B4	6.730	6.551	Ø .136 THRU 8-32 UNC - 2B THRU
B5	7.486	5.718	Ø .136 THRU 8-32 UNC - 2B THRU
B6	8.117	3.983	Ø .136 THRU 8-32 UNC - 2B THRU
B7	8.603	1.800	Ø .136 THRU 8-32 UNC - 2B THRU
B8	8.700	7.579	Ø .136 THRU 8-32 UNC - 2B THRU
B9	10.801	3.435	Ø .136 THRU 8-32 UNC - 2B THRU
C1	5.236	5.728	Ø .201 THRU TAP FOR #10-32 HELICOIL INSERT = 1.0 * DIA.
C2	6.736	5.728	Ø .201 THRU TAP FOR #10-32 HELICOIL INSERT = 1.0 * DIA.
C3	8.236	5.728	Ø .201 THRU TAP FOR #10-32 HELICOIL INSERT = 1.0 * DIA.
C4	9.736	5.728	Ø .201 THRU TAP FOR #10-32 HELICOIL INSERT = 1.0 * DIA.
D1	3.063	11.441	Ø .107 THRU 6-32 UNC THRU
D2	7.350	8.867	Ø .107 THRU 6-32 UNC THRU

UNLESS OTHERWISE SPECIFIED DIMENSIONS
ARE IN INCHES, REMOVE BURRS AND
BREAK SHARP EDGES 0.005-0.010

TOLERANCES: .XX±.010 .XXX±.005
ANGLES ±0.5° UNLESS NOTED,
ALL SURFACES 64 UNLESS NOTED

MATERIAL: 6061 T6 ALUMINUM
QNTY: 3



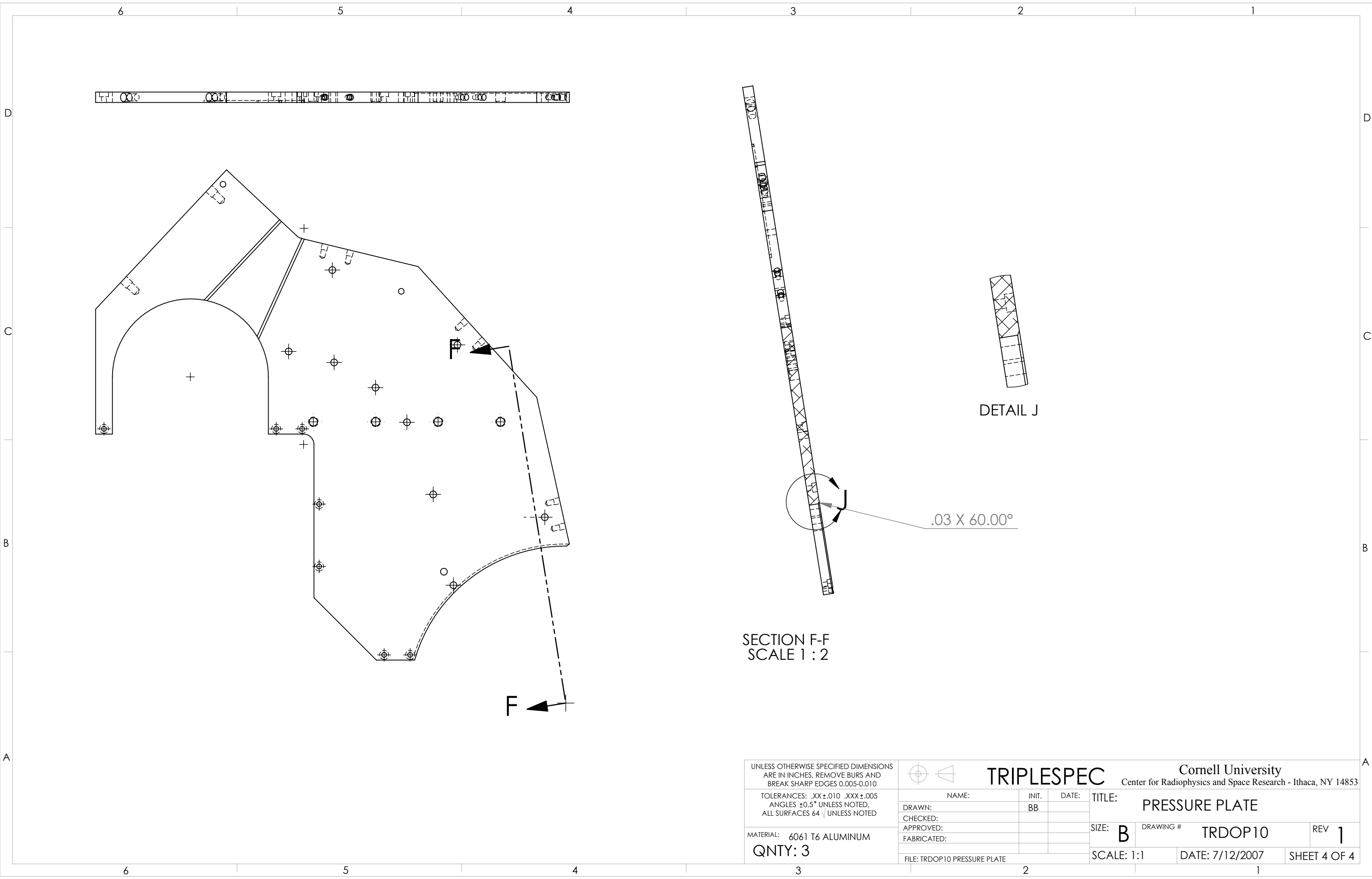
NAME: INIT. DATE: TITLE:
DRAWN: BB
CHECKED:
APPROVED:
FABRICATED:

FILE: TRDOP10 PRESSURE PLATE

TRIPLESPEC

Cornell University
Center for Radiophysics and Space Research - Ithaca, NY 14853

SIZE: **B** DRAWING # **TRDOP10** REV **1**
SCALE: 1:1 DATE: 7/12/2007 SHEET 3 OF 4



SECTION F-F
SCALE 1 : 2

DETAIL J

.03 X 60.00°

UNLESS OTHERWISE SPECIFIED DIMENSIONS
ARE IN INCHES, REMOVE BURS AND
BREAK SHARP EDGES 0.005-0.010

TOLERANCES: .XX±.010 .XXX±.005
ANGLES ±0.5° UNLESS NOTED,
ALL SURFACES 64 UNLESS NOTED

MATERIAL: 6061 T6 ALUMINUM
QNTY: 3



NAME:	INIT.	DATE:
DRAWN:	BB	
CHECKED:		
APPROVED:		
FABRICATED:		

TRIPLESPEC

Cornell University
Center for Radiophysics and Space Research - Ithaca, NY 14853

TITLE:	PRESSURE PLATE		
SIZE: B	DRAWING #	TRDOP10	REV 1
SCALE: 1:1	DATE: 7/12/2007	SHEET 4 OF 4	

FILE: TRDOP10 PRESSURE PLATE