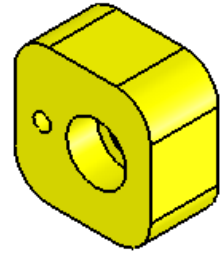
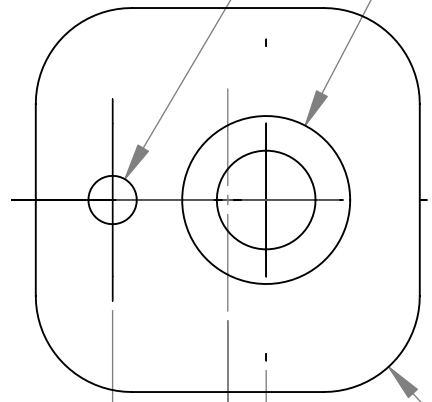


REVISIONS				
REV.	ZONE	DESCRIPTION	DATE	APPROVED
0		Initial Release.	8/31/2004	



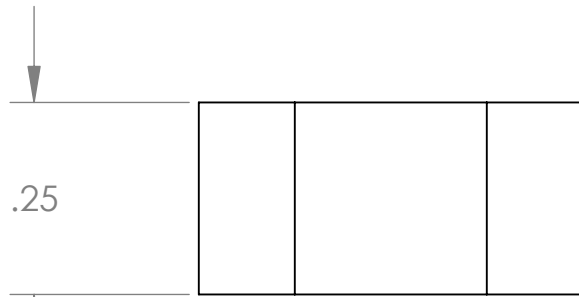
Ø PRESS FIT 1/16 GROUND PIN  
 Ø .129 THRU ALL  
 □ Ø .219 ▽ .112



4 X R.125

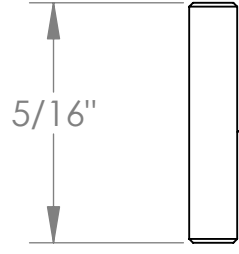
.150

.050



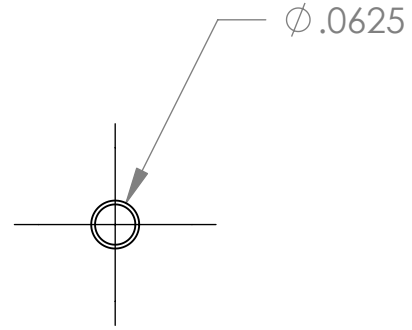
.25

.50



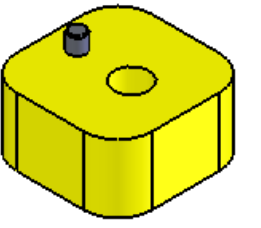
5/16"

NOTE: Pin can be shorter.

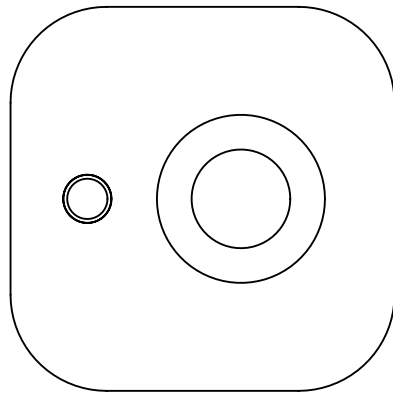
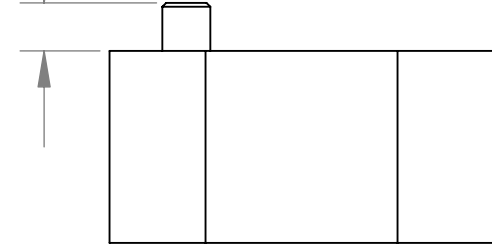


Ø.0625

MTRL: Stainless Steel



1/16"



UNLESS OTHERWISE SPECIFIED DIMENSIONS ARE IN INCHES, REMOVE BURS AND BREAK SHARP EDGES 0.005-0.010  
 TOLERANCES: .XX ± .010 .XXX ± .005  
 ANGLES ± 0.5° UNLESS NOTED, ALL SURFACES 64 UNLESS NOTED  
 MATERIAL: 6061 Aluminum  
 QNTY: 27



TRIPLESPEC

Cornell University  
 Center for Radiophysics and Space Research - Ithaca, NY 14853

NAME:	INIT. CH	DATE:
DRAWN:		
CHECKED:		
APPROVED:		
FABRICATED:		
FILE: TRDOP65 Prism Align Block		

TITLE: Prism Alignment Block Assem.	SIZE: B	DRAWING # TRDOP65	REV 0
SCALE: 4:1	DATE: 9/18/2006	SHEET 1 OF 1	