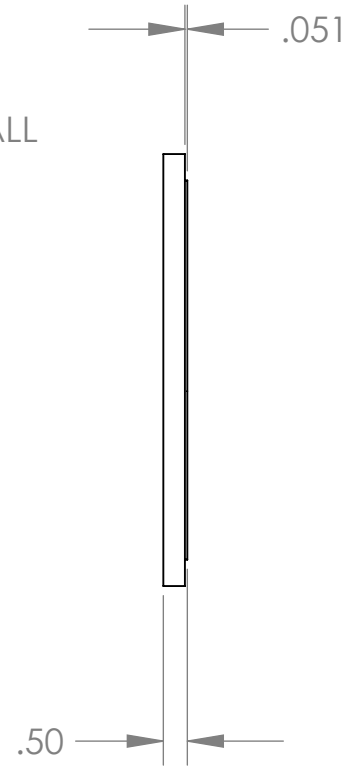
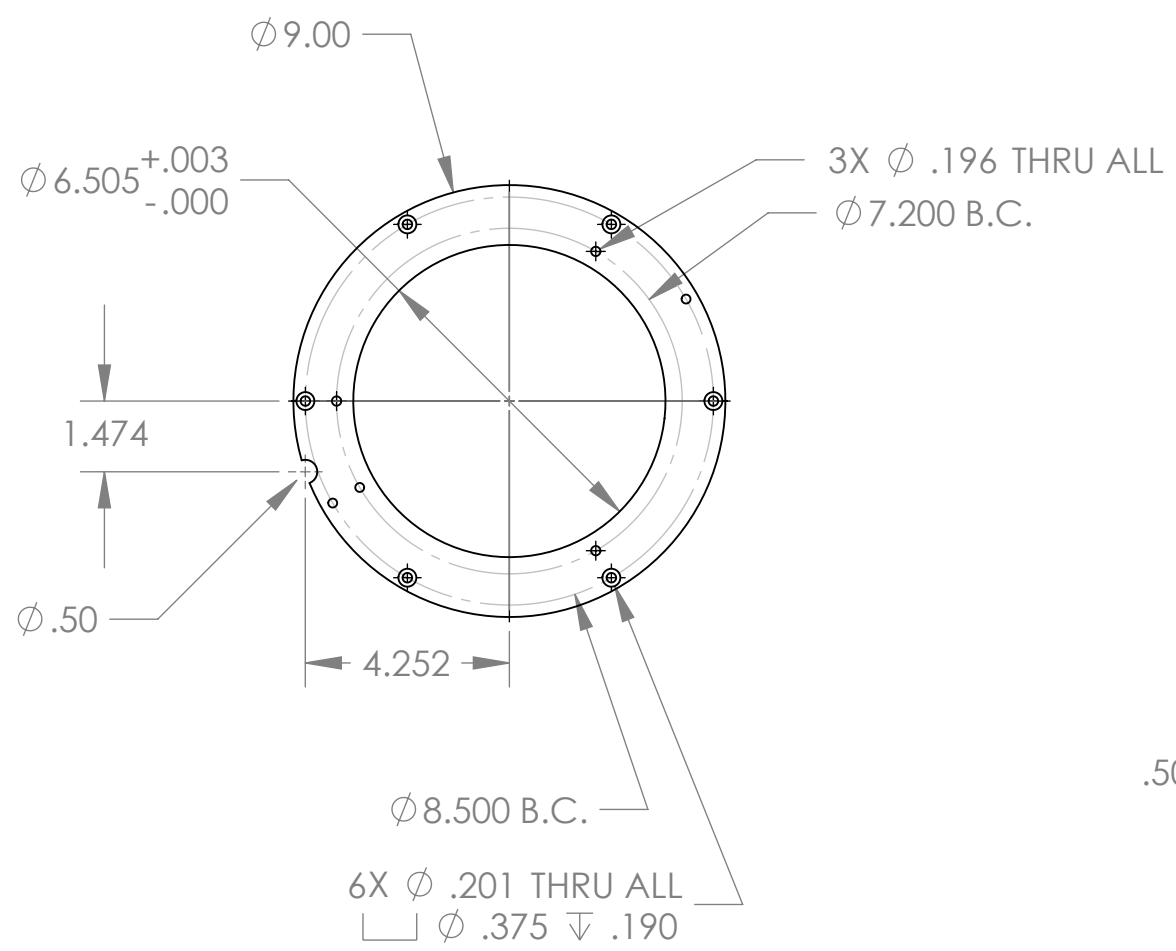
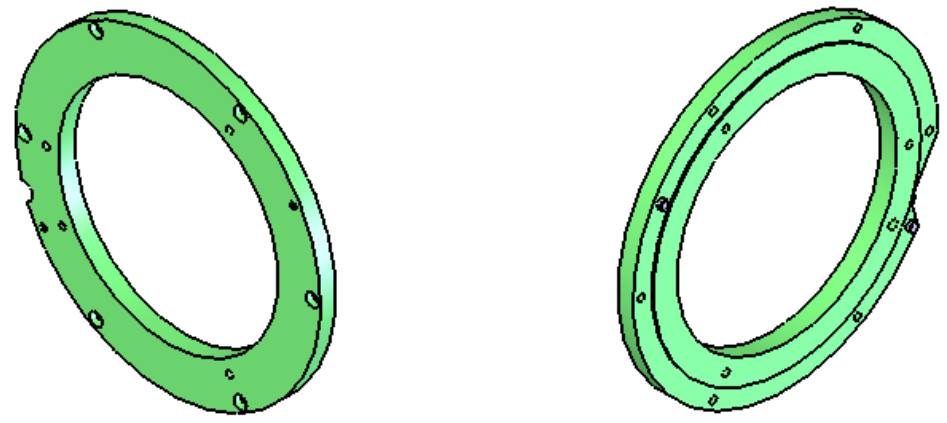
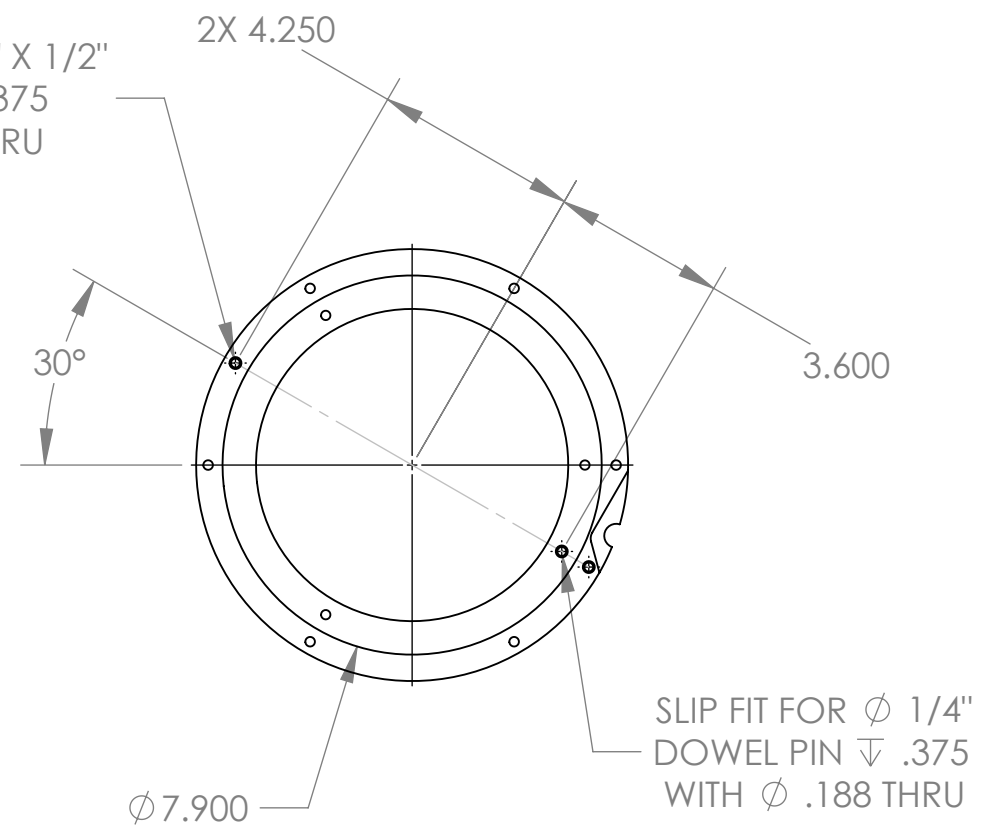


REVISIONS				
ZONE	REV.	DESCRIPTION	DATE	APPROVED
	0	INITIAL RELEASE.	11/10/06	CH
	1	ADDED SHEET 2.	02/15/07	JCW
B6		INCREASED ID PRECISION FROM .XX TO .XXX AND ADDED SYMMETRIC TOLERANCE.		
B6	2	ADDED 1/2 CUT OUT.	05/16/07	SCP

VIEW WITH PINS



2X PRESS FIT $\phi 1/4" \times 1/2"$
DOWEL PIN $\nabla .375$
WITH $\phi .188$ THRU



UNLESS OTHERWISE SPECIFIED DIMENSIONS ARE IN INCHES, REMOVE BURS AND BREAK SHARP EDGES 0.005-0.010

TOLERANCES: .XX $\pm .010$.XXX $\pm .005$
 ANGLES $\pm 0.5^\circ$ UNLESS NOTED,
 ALL SURFACES 64 UNLESS NOTED

MATERIAL: 6061-T6 ALUM
 QTY: 3

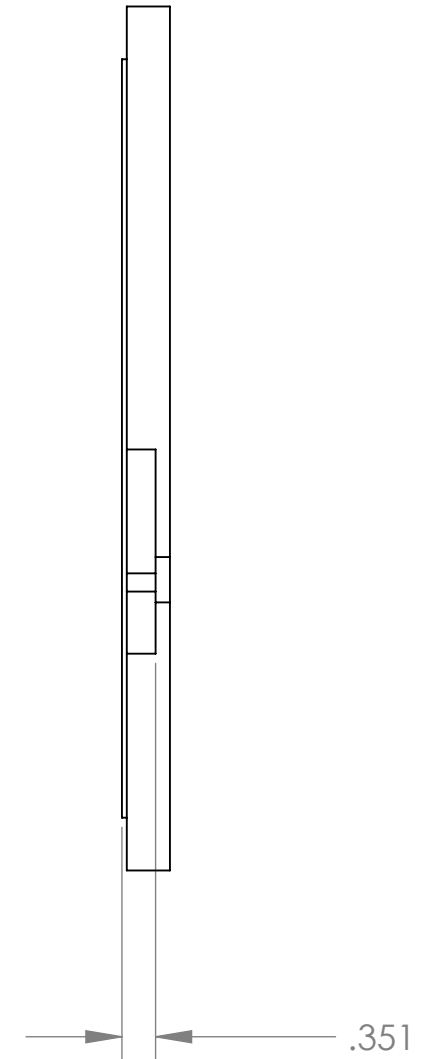
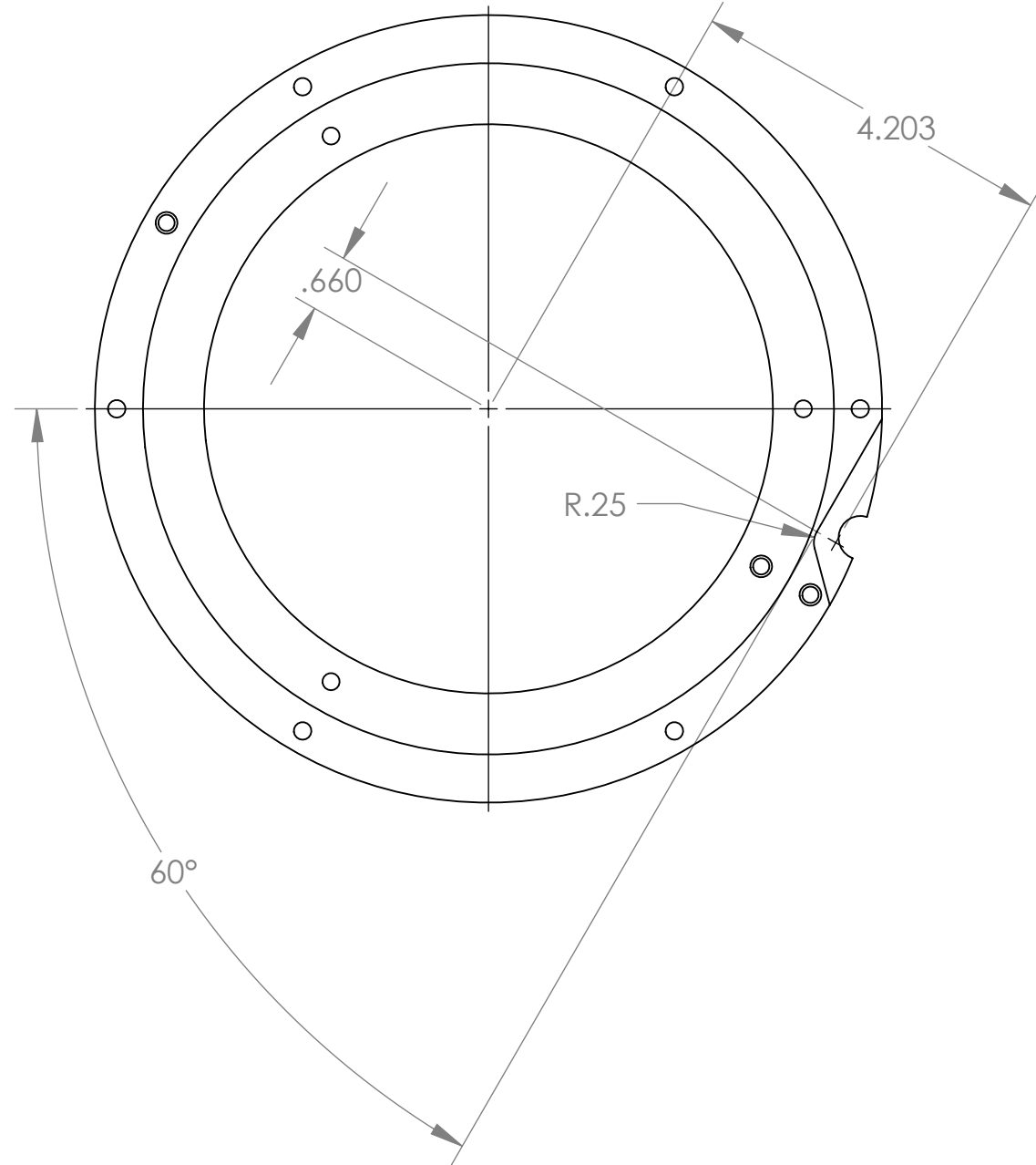
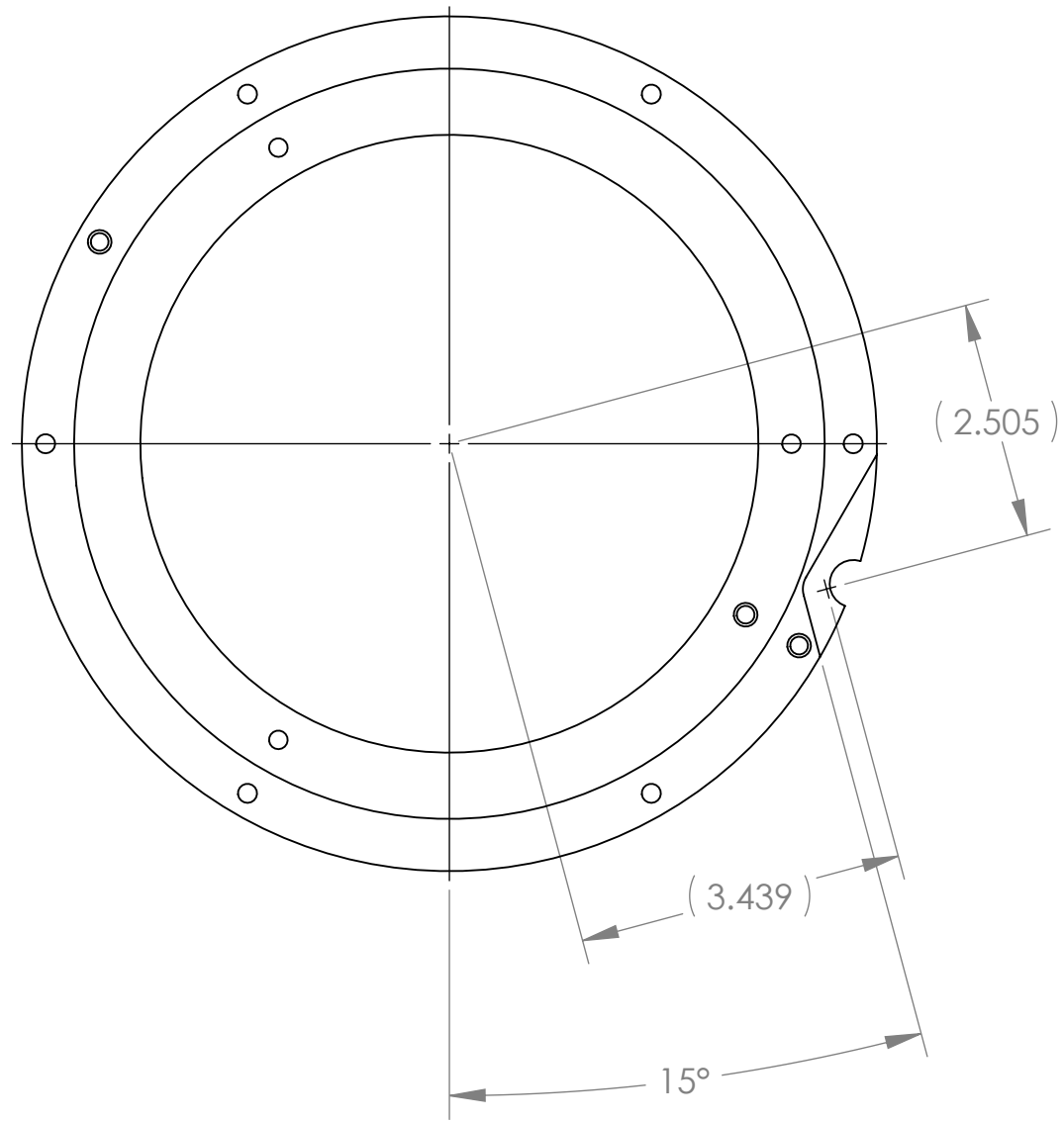
TRIPLESPEC

Cornell University
 Center for Radiophysics and Space Research - Ithaca, NY 14853

NAME:	INIT.	DATE:	TITLE:
DRAWN: SCP	SCP	05/16/07	SPEC CAMERA RING
CHECKED: SCP	SCP	05/16/07	SIZE: B
APPROVED:			DRAWING # TRDOP15
FABRICATED:			REV 2

FILE: TRDOP15 SPEC CAMERA RING

SCALE: 1:4 DATE: 5/16/2007 SHEET 1 OF 2



UNLESS OTHERWISE SPECIFIED DIMENSIONS ARE IN INCHES, REMOVE BURS AND BREAK SHARP EDGES 0.005-0.010

TOLERANCES: .XX±.010 .XXX±.005
 ANGLES ±0.5° UNLESS NOTED,
 ALL SURFACES 64 UNLESS NOTED

MATERIAL: 6061-T6 ALUM
 QTY: 3

NAME:	INIT.	DATE:
DRAWN: SCP	SCP	05/16/07
CHECKED: SCP	SCP	05/16/07
APPROVED:		
FABRICATED:		
FILE: TRDOP15 SPEC CAMERA RING		

Cornell University Center for Radiophysics and Space Research - Ithaca, NY 14853	
TITLE:	SPEC CAMERA RING
SIZE: B	DRAWING # TRDOP15
SCALE: 1:2	DATE: 5/16/2007
	SHEET 2 OF 2

REV 2